

PROFESSIONAL SUPPORT

Technical and cost effective hints for busy Consulting and Contracting professionals

Can't fit a toilet where you want - Now you can pump further

● THE PROBLEM:

The selected toilet or bathroom location means the required discharge pipe route exceeds the pumping capabilities of a standard domestic "behind the toilet" macerator pump.

Typical applications.

Domestic - House extensions.

Light Commercial - Hotel bedrooms, staff only toilets for small shops or offices.

● THE SOLUTION:

1. decide on the usage of the toilet. Domestic or light commercial.
2. send a sketch of the required pipe run, from the preferred toilet location to the discharge point (Include the number of bends, changes of elevation and static lift) to the Application Team at Pump Technology.
3. we will calculate the site system curve for you and then confirm a suitable pump selection. The New FlushMaster may be the solution due to its capacity for pumping further and higher than a standard domestic macerator pump.

If this is the case, your domestic or light commercial toilet or bathroom can be placed in the preferred position within the property and you can have confidence of flush and discharge!



New FlushMaster



The FlushMaster is different and more capable than other domestic toilet pumps

- **A Proper Pump:**

It utilises a proper pump! The pump is of submersible free flow vortex impeller design. Not a domestic cutter pump.

- **Extended Service Intervals:**

The flow optimised **open** centrifugal Vortex impeller design also extends cleaning and service intervals. Clearances between pump opening and tank are larger.

- **Multiple Uses:**

The unit is suitable for connection to a single toilet, bidet, washbasin or shower. (Not a bath or washing machine).

- **Pipe Requirements:**

For new installations, not retrofit. Pipe requirement DN32, dia 28 ID or DN40, dia 36 ID.

- **Built-in Alarm:**

FlushMaster features an Integral, acoustic alarm and volt free connections for coupling to a remote alarm or BMS.

- **Simple Un-clogging:**

The unit features the ability to unclog the impeller without removing the cover. Simply push a screwdriver down onto the head of the motor / pump shaft, reverse the impeller and the clogged item will probably drop free.

- **Stubborn Blockages:**

For more stubborn blockages, simply remove two screws, twist and lift the complete motor / pump assembly away from the collecting tank. This will enable you to see and easily clear the foreign object.

- **Easy Component replacement:**

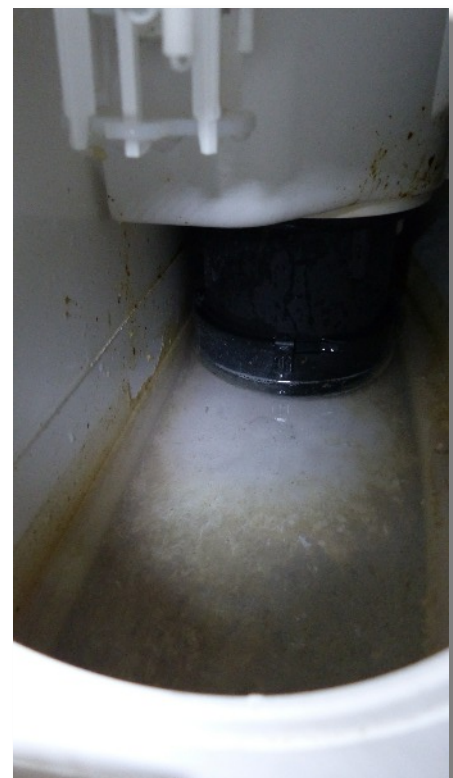
All parts can be simply removed and replaced without removing the tank from the toilet.

- **Multiple Connections:**

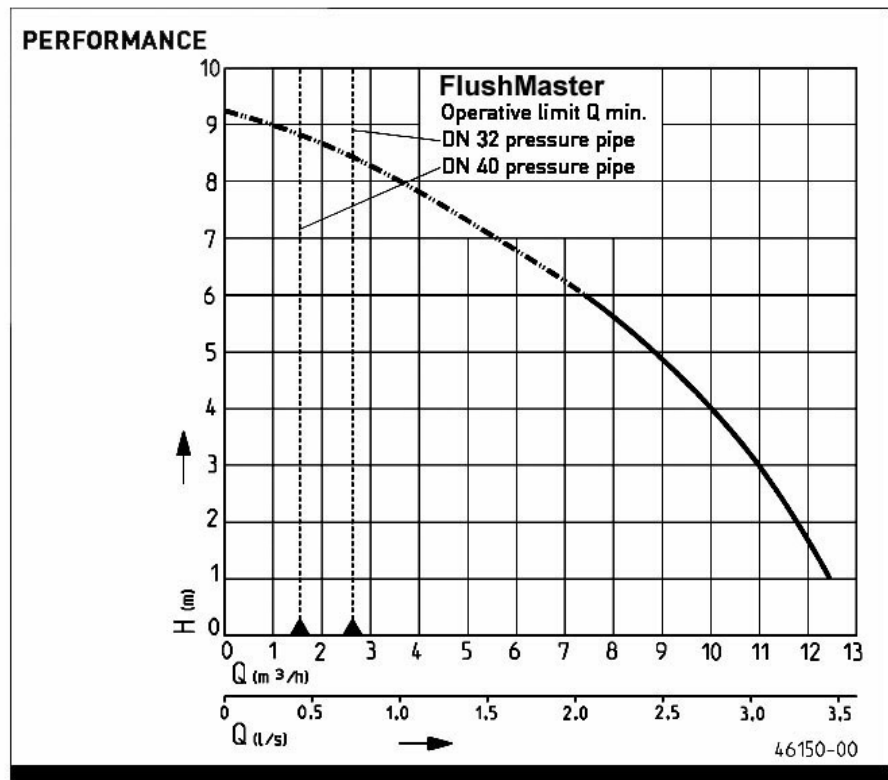
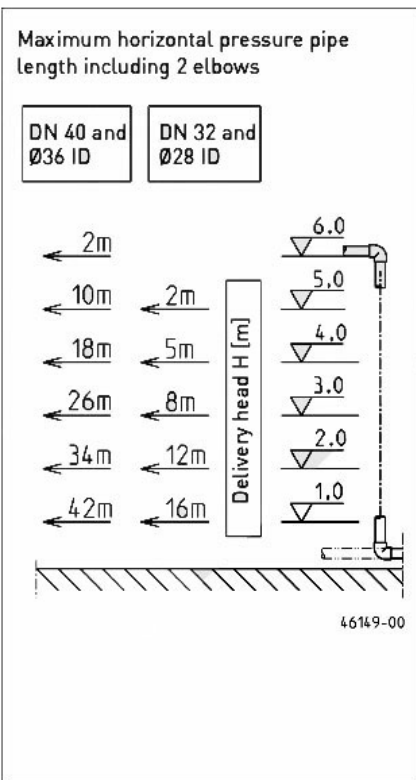
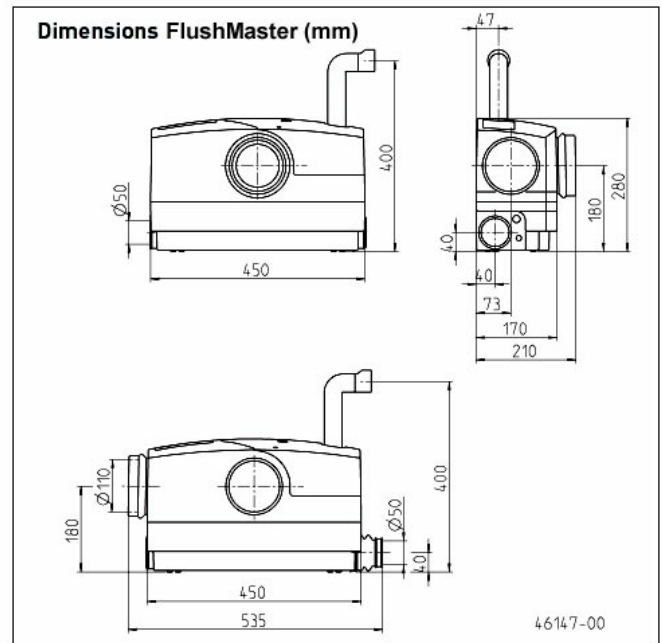
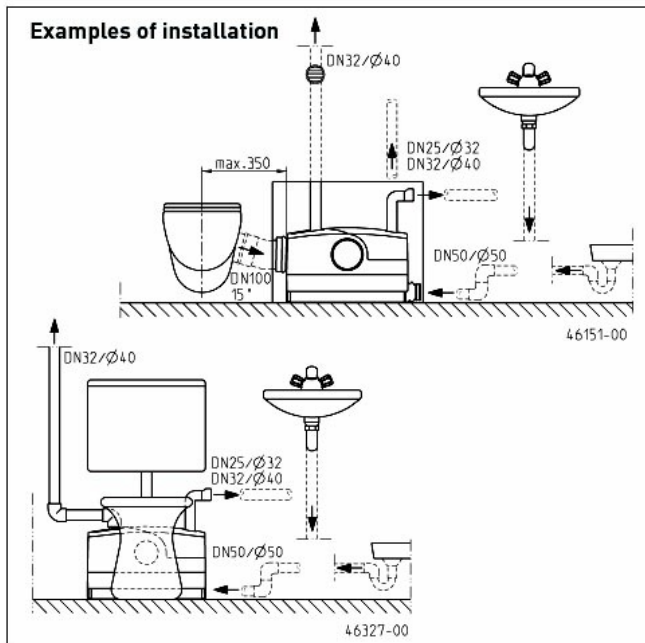
Each pump is supplied with a full set of installation connections for direct mounting behind the toilet or mounting behind a partition wall.



Easy access to controls



Easy cleaning



FlushMaster

Type	Height x width x depth	Cable	Weight approx.	Code no.
FlushMaster	280 x 460 x 170 mm	1.5 m	6.2 kg	JP45367
Accessories:				
Installation kit for the cover of the inspection opening (flexibly adjustable to the tiles, 400 x 500 mm min.)				JP41075
Stop valve 1¼"				JP44785

PERFORMANCE

Type	Delivery head H [m]	1	2	3	4	5	6
FlushMaster	Flow rate Q [l/min]	208	196	183	163	146	125

ELECTRICAL DATA

Type	Type of current	Voltage Volt	Motor rating kW P ₁	RPM min ⁻¹	Current Ampere	Motor protection	Plug
FlushMaster	1-phase	1/N/PE~230	0.720	2570	3.2	in the winding	Safety-

When you are not sure if the application is domestic or commercial?

● Domestic or Light Commercial Applications:

Domestic means household situations where you know the users of your toilet. At the upper end of the definition, a domestic unit could be adopted for applications like a small office toilet, small shop toilet (for a handful of staff only). Light commercial is a term sometimes used for this type of application.

As soon as the general public have access to the toilet you should consider it to be fully commercial, requiring a commercial sewage pumping solution. For example a lightly used disabled toilet in a restaurant will require a commercial solution.

Don't push the boundaries; always upgrade your pumping specification if in any doubt.

● Commercial Applications:

Please call the Application Team at Pump Technology to assist with the selection of Commercial Sewage Pumping Solutions.

The EffluMaxi range for floor mounted solutions and the PumpMatic for below ground solutions.

Pump Technology Ltd commercial products are the specified choice for leading retail chains like M&S, Costa Coffee and many more premium outlets where customer satisfaction is paramount.

FlushMaster:

The Professional Solution for connection to a single toilet, bidet, washbasin or shower with long or complex pipe runs.



Efflu Maxi Single



PumpMatic 750



FlushMaster

Pump Technology Ltd and its Pumping Partners offer nationally:

- The best pump selection for each specific commercial requirement
- Full Installation & commissioning support
- Maintenance & repair contracts nationally.
- CPD's / Product reviews / training



0118 9821 555

www.pumptechology.co.uk