



The perfect solution for:

- Toilets
- Showers
- Dishwashers
- Sinks
- Glass washers
- Washing machines



EFFLU MAXI[®] 80 TWIN

Ideal for Offices, Schools, Shops, Pubs, Restaurants, Factories, Hospitals and Warehouses.

The Efflu Maxi 80 is a fully automatic sewage waste pumping system suitable for domestic and commercial installations where gravity drainage is not possible. This unit is designed to pump waste from toilets, commercial/industrial sinks, wash basins, utility sinks or any situation where waste water needs to be collected and pumped to the drainage system.

Suitable for any commercial environment.

TECHNICAL SPECIFICATION

Model	80E	80D	80/51D	80/52D
Power Supply	240v	3ph	3ph	3ph
FLC (A)	7.1	2.2	3.9	5.1
Max Head (mtr)(Closed Valve)	7	7	9.5	11
Max Flow Rate (l/s)	13	13	18	16
Solids Handling (mm)	70	70	70	70
Minimum Invert Height (mm)* floor to centre	275	275	275	275

* *units can be fitted with 180mm invert.*

Unit will require commissioning on site.

INSTALLATION GUIDELINES

The Efflu Maxi 80 Twin should be positioned on a firm level surface. The unit must be located lower than the outflow of the appliances served as to provide a gravity fall into the unit.

It is extremely important to site the Efflu Maxi 80 Twin with access in mind in the event of maintenance being required.

ON DELIVERY

Check pump and control panel has not been damaged in transit.

INLET CONNECTIONS

DN150 Inlet located at the back of the unit. Inlet height is fixed at 275mm from floor to centre.

DN100 reducer supplied with unit, if used this will lower inlet height to 250mm floor to centre.

Additional 50mm inlet located on the right side of the unit at 315mm floor to centre.

DISCHARGE CONNECTION

The tank has a 3" DN80 PN10 flange hosetail discharge outlet connecting to a DN100 flexible sleeve.

All pipework must be run in Class C or D UPVC solvent weld.

IMPORTANT: Any bends in the rising main must be slow radius swept 90's.

ELECTRICAL CONNECTION

A qualified person in accordance with the Institute Of Electrical Engineers Regulations should connect the unit to the appropriate mains supply taking into account all the electrical information provided.

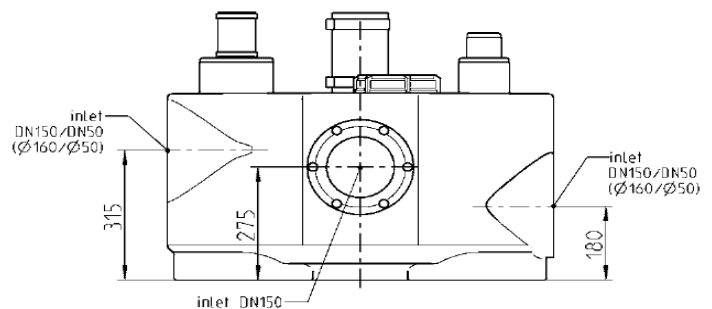
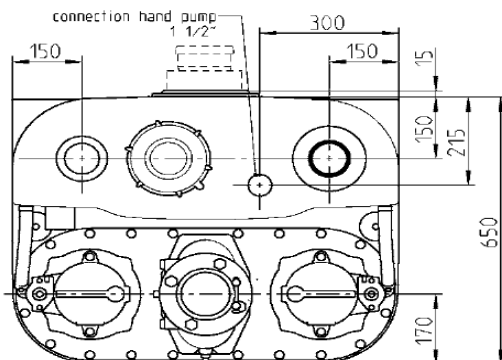
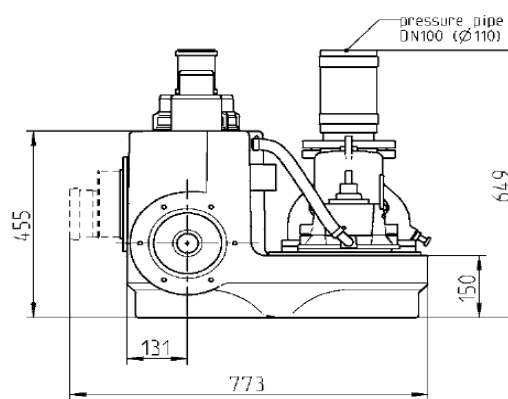
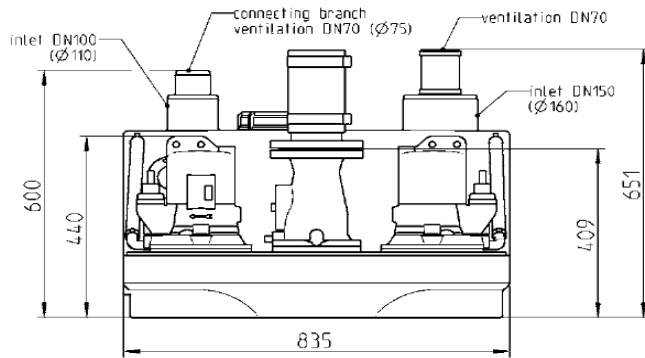
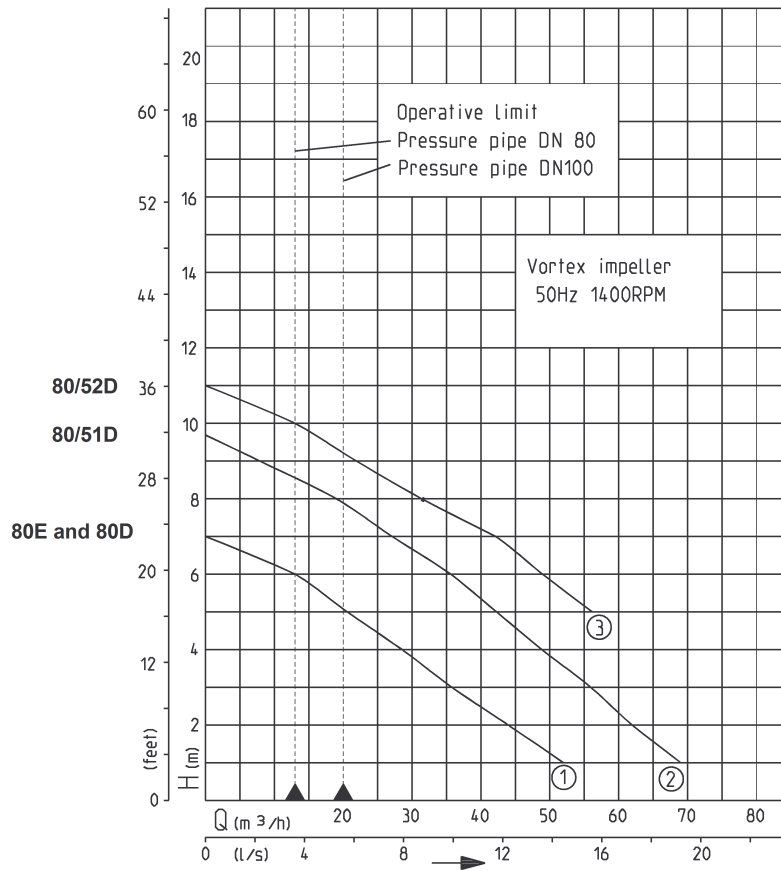
IMPORTANT: All pump systems must be used with an appropriate motor rated protection device.

VENTING

Units require venting. If vent to atmosphere cannot be achieved a 3" vent pipe must be run off the top of the tank to the ceiling void and connected to a Microvent

MAINTENANCE

Unit should be serviced on a 6 to 12 month basis. Please contact our sales office for a service and maintenance contract.



Additional inlets could be made by sawing the pre-formed tank socket or sleeve.