

Remedial and service solution for Pump Stations

Charlbury Community Centre, Oxford.

The Problem:

A twin pump, sewage station system where both chambers had heavy build-up of waste that had not been discharged.

After receiving a call from the customer, who requested an initial visit, Pump Technology™ engineers, who were in the area on another job, made this call free of charge as a goodwill gesture.

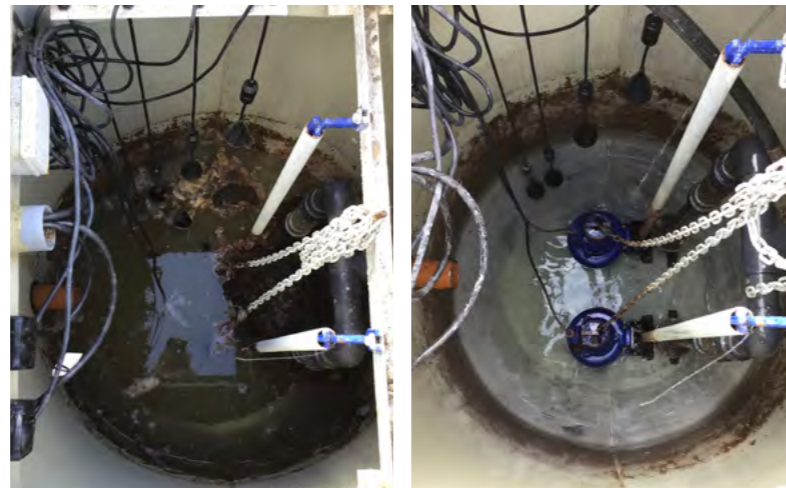
They surveyed the site and discovered that the blockage was mostly paper towels, but some Fats Oils and Grease and human waste. Also, the chambers had some debris inside which was causing additional problems.

The Installation:

- 2 x Pump Technology Ltd.™ Pumpmatic™ 400 stations.
- 4 x Sulzer AS0 pumps with Custom Pump Technology Ltd.™ control panels.

We found that:

- Chamber 1 had a Non-Return Valve stuck open. It also required cleaning and servicing.
- Chamber 2 worked within normal parameters, but required cleaning and servicing.
- Pump Technology Ltd.™ produced a quote for remedial and service work and this was accepted.



One of the blocked chambers

Chamber after service, vacuuming and jetting

The Solution:

Our service engineering team attended site to carry out the work.

Additionally, an engineer from Neil Lowes Drainage, who provided a tanker for the vacuuming and jetting of the tank, attended.

Our engineers, Alan and Sam Werrell, cleaned the tanks completely, removed the pumps to clean and service them, then re-installed them. They also fixed the problem with the Non-Return Valve which was caused by a stone obstructing the flap.

The entire system was vacuumed and jet cleaned, Tank lids were replaced and correctly sealed and then everything, including all of the control systems, was put through a thorough test programme.

The Customer comments:

"Alan & Sam did a great job and cleared the 2 chambers - both of which had a lot of building debris at the bottom (stones in chamber 2, and gravel in chamber 1, no doubt the reason for the malfunction of the Non-Return Valve). Dave from Neil Lowes was also very helpful."

The customer is now on a 6-month Pump Technology Ltd.™ servicing program with cleaning of the tanks via a tanker to be completed every 18-24 months.



Twin Control Panel System



Pump Technology Ltd™
0118 9821 555
www.pumptechnology.co.uk

PUMPING SOLUTIONS



- **DrainMajor™**
Large kitchens & utility rooms



- **Booster sets**
For houses



- **PumpMatic™**
For single & multiple housing



- **DrainMinor™**
Small kitchens & utility rooms



- **EffluMatic™**
Wastewater and sewage
Bathrooms, kitchens & utility rooms



- **FlushMaster**
Behind toilet pump
Pumps up a slope!



- **Shower drainage pumps**
For shower trays & wet rooms



- **MiniMatic**
For house extensions & garden rooms

0118 9821 555

- Wastewater and sewage pumping
- In-house consultant engineer
- Rapid response & advice
- Call our experienced team

PUMP™
 TECHNOLOGY LTD
www.pumptechnology.co.uk



@ PumpTechLtd

56 Youngs Industrial Estate
 Aldermaston, Berks, RG7 4PW

