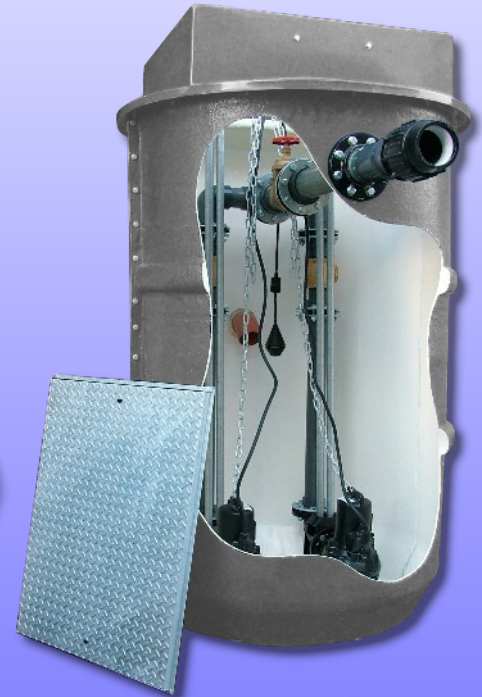


- Distributors for major Pump Manufacturers
- Sewage Pumps & Pumping Stations
- Waste Water Pumping Systems
- Submersible Pumps & Tanks
- Booster Sets & Break Tanks
- Macerators



**Commercial and Industrial Applications.
Sewage, Waste Water or Clean Water.
Difficult runs - High heads - Very hot water.**

Whatever the pumping requirement call:-

Dear Customer,

Our catalogue really only gives an overview of our business.
Pump Technology Ltd is like a bespoke tailor!

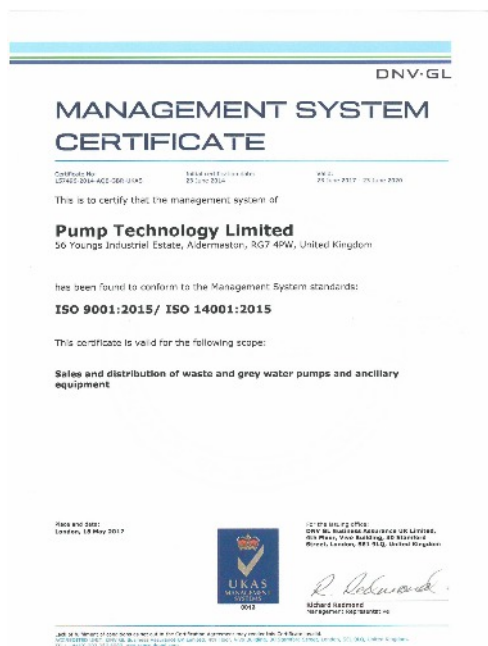
We assemble pumps and pumping systems for sewage, waste water and cold water booster sets. Our systems can be customised for above or below ground applications.
Our tanks are made of GRP to a very high standard by a group company.

We are able to supply pumps and fittings from most major manufacturers to suit your specific requirements.

Pump Technology Ltd. is a main distributor for the following:



Quality Assured



Accreditations



TRY US OUT! We look forward to speaking to you soon.

CONTENTS	PAGE No.
FLOOR MOUNTED WASTE SYSTEMS	
DRAINMINOR	3 4
DRAINMAJOR RANGE	5 8
DRAINMAJOR DUO	9 10
DRAINMAJOR RANGE	11 12
SUBMERSIBLE PUMPS	13 14
FLOOR MOUNTED SEWAGE SYSTEMS	
EFFLU MAXI RANGE	15 18
EFFLU GRINDER	19 20
PACKAGED PUMP SEWAGE SYSTEMS (BELOW GROUND)	
MINIMATIC	21
PUMPMATIC RANGE	22 27
CONTROL PANELS	28
ANCILLIARY ITEMS	
ALARMS & FLOAT SWITCHES	29
HAND PUMPS & IN-LINE STRAINERS	30
CHARCOVENT & MICROVENT	31
FLUSHMASTER TOILET UNIT	32
BOOSTER PUMPS & SYSTEMS	33 34
WHALE SHOWER DRAIN PUMPS	35 36
GREASE MANAGEMENT	37 38
CINDERELLA INCINERATING TOILETS	39
GROUP COMPANIES	40
NOTES	41
TERMS & CONDITIONS	42

DRAINMINOR

The complete, automatic, waste water pumping system!

- ✓ EASY TO INSTALL
- ✓ HANDLES 10mm SOLIDS
- ✓ COMPACT SIZE:
Fits into a very small space 322mm high x 380mm wide x 290mm deep
- ✓ POWERFUL:
Pumps 5 metres vertically, 50 metres horizontally OR a combination of both
- ✓ LID EASILY REMOVED FOR CLEANING
- ✓ PIPEWORK 1 1/4" (32mm)
- ✓ PLASTIC/STAINLESS STEEL PUMP:
Not subject to premature corrosion
- ✓ VERTICAL CENTRIFUGAL TYPE PUMP:
With strainer base
- ✓ QUIET IN OPERATION
- ✓ AUDIBLE ALARM:
To monitor water level
(Available as an accessory)

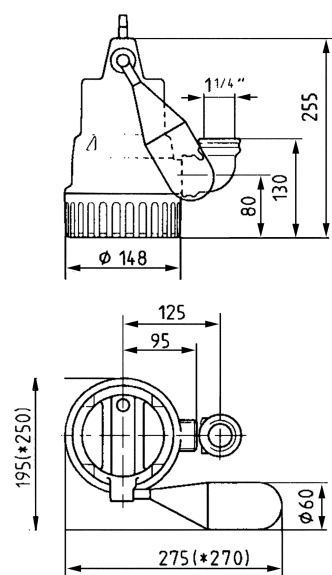


● Also available in 316 Stainless steel



DRAINMINOR 'SL'

- Designed to take waste water containing mildly corrosive chemicals (20 parts per million concentration)
- Ideal for waste water from printing / photographic processes and laboratories.
- Corrosion resistant
- Mechanical seals
- Can handle overflows from Softeners and Urinals



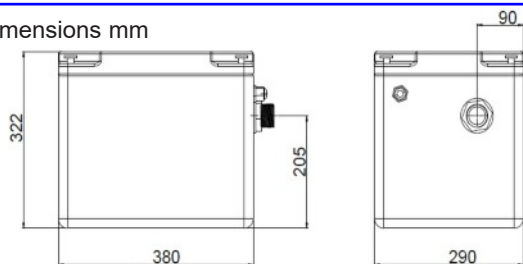
Dimensions mm

PUMPS DOMESTIC WASTE WATER FROM:

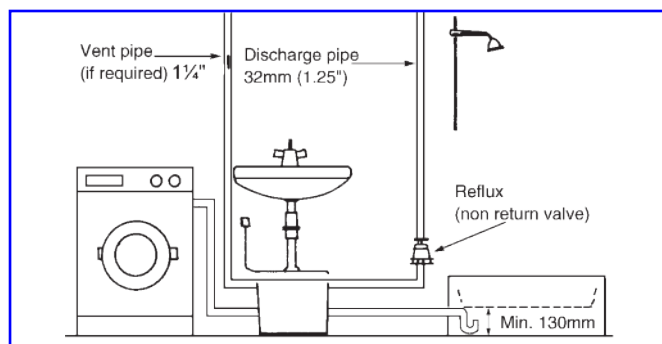
- KITCHEN SINKS
- BASINS
- SHOWERS & BATHS (special "low level" float required)

- WASHING MACHINES & DISHWASHERS (special "low level" float required) see over

Dimensions mm



25 ltr Approx. Capacity



56 Youngs Industrial Estate, Aldermaston, Berks. RG7 4PW

Tel: 0118 9821555 Fax: 0118 9821666

E-mail: support@pumptechnology.co.uk

Web Site: www.pumptechnology.co.uk

DRAINMINOR DOMESTIC, LIGHT COMMERCIAL, WASTE WATER PUMPING SYSTEM

Electrical Data

Pump	Current Type	Voltage Volts	Motor Power		R.P.M. Min -1	F.L.C. Amp	Motor Protection	Plug
PTL 30	1 Phase	230	P1 0.32	P2 0.20	2720	1.4	Incorporated	Safety

DRAINMINOR: This consists of a durable tank manufactured from polyethylene laminate.

QUALITY: The tank is pigmented throughout with an externally smooth isophthalic polyester gel coat and resin enriched lining.

OUTLETS: The tank has a 1¼" BSP discharge outlet.

PUMP Type PTL 30

Vertical, single-stage, submersible, with foot strainer (10x40 mm). Volute casing with 1¼" (male) radial pressure branch.

Bearings

Common shaft for pump and motor, mounted in ball bearings and grease lubricated for life.

Seal

Shaft sealing by means of shaft sealing rings and intermediate oil chamber, safe to run dry for short periods.

Motor

Submersible motor, type of enclosure IP 68, insulation class B, starting via plug or automatic circuit. Completely water tight cable entry.

Materials

Motor housing in high-grade steel, volute casing, impeller and control head in plastic (GRP), shaft in stainless steel, rubber insulated flexible cable.

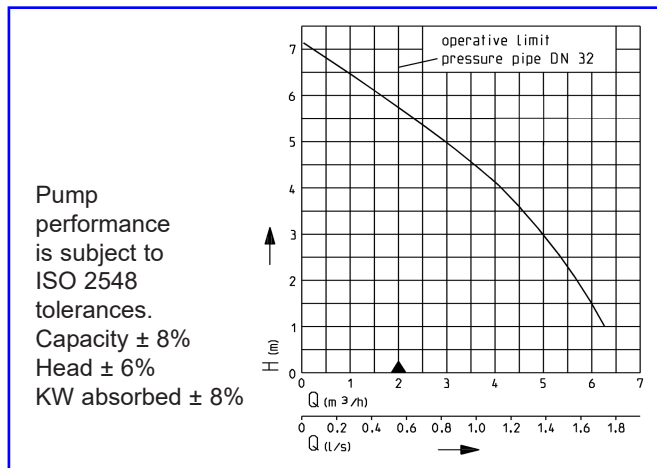
ALL INVERTS TO BE MADE TO SIDE OF TANK USING TANK CONNECTORS.

1¼" MINIMUM VENT TO AIR REQUIRED.

The **DRAINMINOR** comes complete with a one year warranty. In the unlikely event of technical difficulties, please ring:

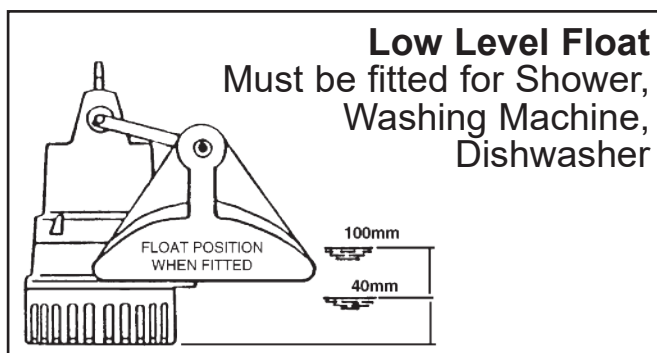
Pump Technology Limited on 01189 821555

IMPORTANT: This unit is not designed to handle sewage. Please enquire about our packaged sewage pumping systems.



PERFORMANCE PTL 30

Delivery Head/m	1	2	3	4	5	6
PTL 30	1.70	1.57	1.37	1.15	0.82	0.45 ltr/sec



INSTALLATION DRAINMINOR *Installers please note.*

1. Remove lid from tank, check pump is correctly positioned and connecting pipework has not been damaged in transit.
2. Check that the the union is tightly connected so that the pump does not move on its mountings impeding the float action.
3. All inverts should be brought into the tank by drilling a hole and using an appropriate tank connector.
4. Preferably no connections through the lid as this inhibits easy removal of the lid for cleaning tank. (Note: tank **MUST** be positioned in such a way that lid can be removed easily to allow access for tank interior and pump cleaning.)
5. All inverts should be brought into the tank (using tank connectors) at the highest possible level from the floor - i.e. no lower than 200 mm from base of unit. (With low level float 110 mm is the minimum invert level).
6. Ensure that the inflow of water is not directed onto the float arm.
7. A compression fitting can be installed between the non-return valve and the discharge pipework to enable the removal of the **DRAINMINOR** tank if required.
8. Slow radius, swept bends **MUST** be used for every change of direction of the 1¼" discharge pipework.
9. If the discharge pipework connects to a soil stack, manhole etc. **below the discharge outlet of the tank**, an anti-syphon unit **MUST** be fitted to the highest point of the discharge pipework.

MAINTENANCE:

The DRAINMINOR should have the lid REGULARLY removed for CLEANING of the tank and pump

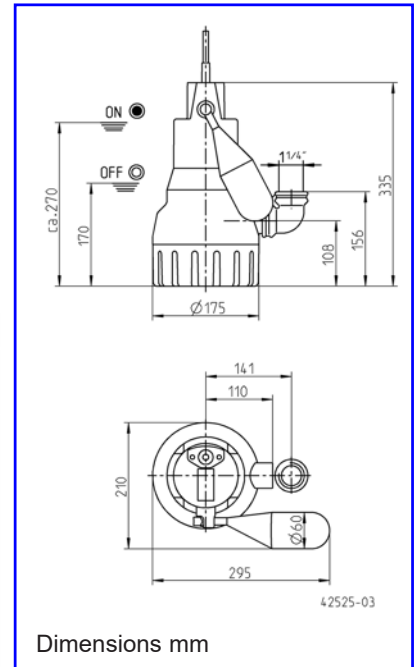
IF YOU HAVE ANY INSTALLATION QUERIES PLEASE TELEPHONE OUR TECHNICAL DEPT. BEFORE INSTALLATION.

The DRAINMAJOR 60 is a waste water pumping system with awesome power ! *10mm Solids handling capacity*



This unit is designed to pump waste water from a Commercial/Industrial sink, wash basin, utility sink or any situation where waste water needs to be collected and pumped to the drainage system.

An important feature of the unit is its high head pumping capability (up to 8 metres - closed valve, no horizontal run) which enables it to handle difficult, awkward or very long discharge pipe runs.



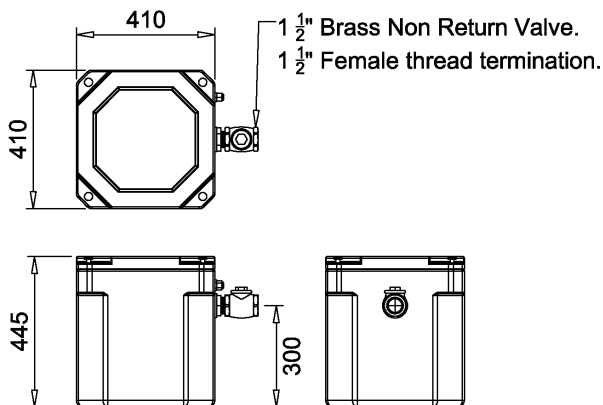
- OFFICES
- WAREHOUSES
- FACTORIES
- SHOPS
- PUBS/CLUBS
- SCHOOLS
- CINEMAS
- THEATRES
- HOSPITALS
- RESTAURANTS

LID EASILY REMOVED FOR REGULAR CLEANING OF PUMP AND TANK

- ✓ WILL PUMP UP TO 8m VERTICALLY
- ✓ 10 mm SOLIDS HANDLING CAPACITY
- ✓ CONTINUOUS RATED MOTOR
- ✓ MECHANICAL SHAFT SEAL (SILICONE CARBIDE)
- ✓ COMPACT SIZE / EASY TO INSTALL
- ✓ COMPLETE, READY TO INSTALL

HIGH LEVEL ALARM (RECOMMENDED ACCESSORY)
to monitor water level

Dimensions mm



The corrosion resistant pump has a mechanical seal which enables the unit to handle mildly diluted chemical in water. This is ideal for handling waste water from printing or photographic processes and laboratory sinks.
If using with cleaners/utility sink or hairdressers basins, use an "Inline Strainer" from Pump Technology.

56 Youngs Industrial Estate, Aldermaston, Berks. RG7 4PW

Tel: 0118 9821555 Fax: 0118 9821666

E-mail: support@pumptechnology.co.uk

Web Site: www.pumptechnology.co.uk

DRAINMAJOR 60: The durable tank is manufactured from polyethylene, fully rigged with internal pipework and non return valve.

QUALITY: The tank is pigmented throughout with an externally smooth isophthalic polyester gel coat and resin enriched lining.

OUTLETS: The tank has a 1.5" BSP male thread discharge outlet. (NRV supplied is female thread).

PUMP Type PTL60: Vertical centrifugal type, single stage for submerged operation, with strainer base, open impeller (10 mm solids handling capacity).

Motor: Fully encapsulated submersible motor with built-in overload/thermal cut-out, watertight (IP68) enclosure, class B insulation. Supplied with built-in level switch.

Pump Casing: Plastic GFK pump body, top cover and GRP impeller, stainless steel encapsulated motor.

Bearings: Combined shaft for motor and pump, mounted in grease lubricated ball bearings.

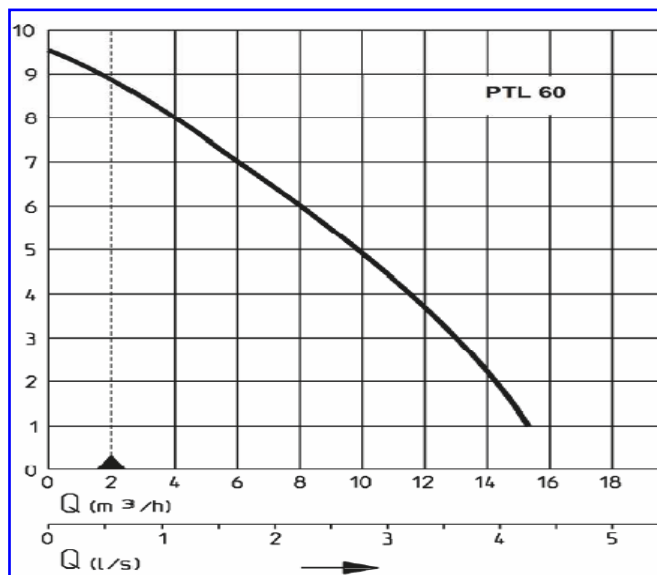
Shaft Seal: Silicon carbide mechanical seal, unaffected by dry running for short periods.

Fitted with mechanical seal and oil buffer chamber, the pumps will give reliable service for long periods with minimum supervision and maintenance, apart from regular cleaning of the tank and pump strainer.

ALL INVERTS TO BE MADE TO SIDE OF TANK USING TANK CONNECTORS.

1 1/4" MINIMUM VENT TO AIR REQUIRED.

IF DISHWASHERS, GLASSWASHERS OR WASHING MACHINES ARE USED A 2" VENT IS REQUIRED.



The **DRAINMAJOR 60** comes complete with a one year warranty. In the unlikely event of technical difficulties, please ring:

Pump Technology Limited on 0118 9821555

The **DRAINMAJOR 730** is recommended for kitchens where **30mm solids handling** capacity is required (e.g. for sinks with waste disposal units).

If your requirement is for commercial kitchens with multiple sinks, dishwashers, glasswashers etc. please use the **DRAINMAJOR 730**.

IMPORTANT: This unit is not designed to handle sewage. Please enquire about our packaged sewage pumping systems.

Technical Data (50 Hz)

Type	Voltage	P1	P2	F.L.C.	RPM	Overload Protection	Max. Solids Size
PTL 60E	single phase 230 V	0.70kW	0.45kW	3.4A	2600	Incorporated in motor (thermostat)	10mm
PTL 60D	3-phase 400V	0.75kW	0.60kW	1.3A	2800		10mm

Depending on the working environment of the DRAINMAJOR it may be advisable to fit a grease trap/interceptor. Please seek advice from our technical department.

INSTALLATION DRAINMAJOR 60 *Installers please note. (use solvent weld or copper pipe)*

1. Remove lid from tank, check pump is correctly positioned and connecting pipework has not been damaged in transit.
2. Check that the union is tightly connected so that the pump does not move on its mountings impeding the float action.
3. All inverts should be brought into the side of the tank by drilling a hole and using an appropriate tank connector.
4. Preferably no connections through the lid as this inhibits easy removal of the lid for cleaning tank. (Note: tank **MUST** be positioned in such a way that lid can be removed easily to allow access for tank interior and pump cleaning.)
5. All inverts should be brought into the tank (using tank connectors) at the highest possible level from the floor - i.e. no lower than 120 mm from base of unit.
6. Ensure that the inflow of water is not directed onto the float arm.
7. Slow radius, swept bends **MUST** be used for every change of direction of the discharge pipework.
8. If the discharge pipework connects to a soil stack, manhole etc. **below the discharge outlet of the tank**, an anti-syphon unit **MUST** be fitted to the highest point of the discharge pipework.

VENTING TO AIR: THE TANK **MUST** BE VENTED TO AIR (1 1/4" MIN.). **DO NOT USE A DURGO / AIR ADMITTANCE VALVE.** IF GLASSWASHERS OR COMMERCIAL/INDUSTRIAL DISHWASHERS/WASHING MACHINES ARE USED IT IS RECOMMENDED THAT AT LEAST A 2" VENT IS TAKEN TO AIR. (IF YOU WISH TO DISCUSS YOUR PARTICULAR APPLICATION WITH REGARD TO VENTILATION PLEASE CONTACT OUR TECHNICAL SALES DEPARTMENT.)

MAINTENANCE:

The DRAINMAJOR 60 should have the lid REGULARLY removed for CLEANING of the tank and pump

The DRAINMAJOR 730/1030 is the ideal waste water pumping system for high temperature, modern environments.

30mm Solids Handling Capacity

This unit is designed to pump waste water from Commercial/Industrial sinks, and utility/cleaners sinks.

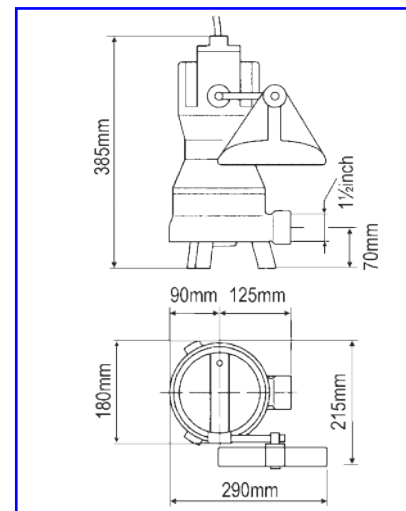
It has been SPECIALLY constructed to handle hot water from commercial dishwashers, washing machines and glass washers.

An important feature of the unit is its high head pumping capability (up to 9 metres) which enables it to handle difficult, awkward or very long discharge pipe runs.

- OFFICES
- WAREHOUSES
- FACTORIES
- SHOPS
- PUBS/CLUBS
- SCHOOLS
- CINEMAS
- THEATRES
- HOSPITALS
- RESTAURANTS



- ZIP TAPS
- DISHWASHERS
- COMBINATION OVENS



PTL 730 'H' version available for extremely hot water - up to 90° C. Check specifications with our Technical Department

- ✓ PUMPS UP TO 8m VERTICALLY
- ✓ 30mm SOLIDS HANDLING CAPACITY
- ✓ CONTINUOUS RATED MOTOR
- ✓ MECHANICAL SHAFT SEAL (SILICONE CARBIDE)
- ✓ COMPACT SIZE / EASY TO INSTALL
- ✓ COMPLETE / READY TO INSTALL

HIGH LEVEL ALARM (RECOMMENDED ACCESSORY)
to monitor water level

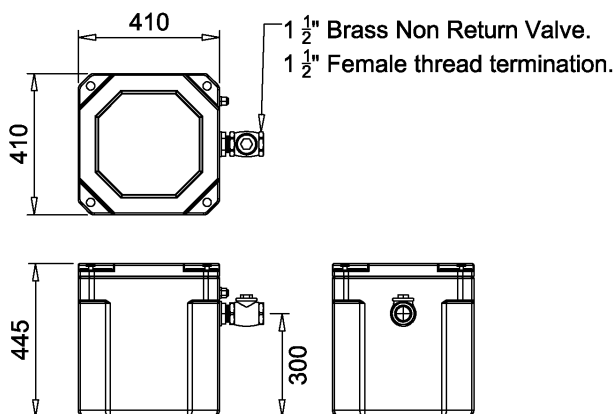
This complete and simple to install System has been specifically designed to handle small amounts of food waste.

The DRAINMAJOR 730 will pump waste water containing solids of up to 30 mm size, such as food particles from kitchen sinks.

The absence of a strainer avoids the familiar problem of pumps failing due to the inlet screen becoming clogged.

Instead, the waterborne particles are picked up by the special 3 vane open impeller and passed directly into the discharge port.

Dimensions mm



DRAINMAJOR 730/1030: The durable tank is manufactured from polyethylene fibre laminate fully rigged with internal pipework and non return valve.

QUALITY: The tank is pigmented throughout with an externally smooth isophthalic polyester gel coat and resin enriched lining.

OUTLETS: The tank has a 1.5" BSP male thread discharge outlet. (NRV supplied is female thread)

PUMP Type PTL730/1030: Vertical single-stage, submersible with free inlet, spiral casing with 1.5" horizontal discharge open vortex impeller, (30 mm solids handling capacity).

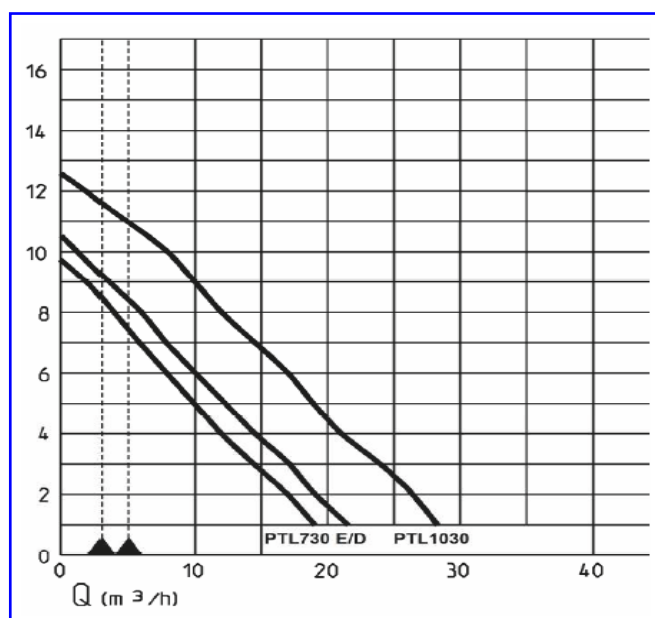
Motor: Fully encapsulated submersible motor with built-in overload/thermal cut-out, watertight (IP68) enclosure, class B insulation. Supplied with built-in level switch.

Materials: Spiral casing in cast iron - Terminal board, hood, impeller, wear plate made of GRP. Motor casing and shaft of stainless steel. Supply through rubber insulated flexible cable.

Bearings: Common shaft for pump and motor, mounted in ball bearings.

Seal: Silicon carbide mechanical seal, oil chamber and double shaft seal towards the motor section, safe to run dry.

For Commercial kitchens with multiple sinks, dishwashers, glasswashers etc., a **DRAIN-KING Twin Pump System** **MUST** be used.



The **DRAINMAJOR 730/1030** comes complete with a one year warranty. In the unlikely event of technical difficulties, please ring:

Pump Technology Limited on 0118 9821555

IMPORTANT: This unit is not designed to handle sewage. Please enquire about our packaged sewage pumping systems.

Technical Data (50 Hz)							
Type	Voltage	P1	P2	F.L.C.	RPM	Overload Protection	Max. Solids Size
PTL 730E	single phase 230 V	0.83kW	0.50kW	3.9A	2500	Incorporated in motor (thermostat)	30mm
PTL 730D	3-phase 400V	0.85kW	0.60kW	1.4A	2800		30mm
PTL 1030E	single phase 230 V	1.37kW	0.98kW	6.0A	2700		30mm
PTL1030D	3-phase 400V	1.36kW	1.06kW	2.4A	2740		30mm

Depending on the working environment of the DRAINMAJOR it may be advisable to fit a grease trap/interceptor. Please seek advice from our technical department. **Phone 0118 9821555 for further information.**

INSTALLATION DRAINMAJOR 730/1030 *Installers please note. (use solvent weld or copper pipe)*

1. Remove lid from tank, check pump is correctly positioned and connecting pipework has not been damaged in transit.
2. Check that the union is tightly connected so that the pump does not move on its mountings impeding the float action.
3. All inverts should be brought into the side of the tank by drilling a hole and using an appropriate tank connector.
4. Preferably no connections through the lid as this inhibits easy removal of the lid for cleaning tank. (Note: tank **MUST** be positioned in such a way that lid can be removed easily to allow access for tank interior and pump cleaning.)
5. All inverts should be brought into the tank (using tank connectors) at the highest possible level from the floor - i.e. no lower than 155 mm from base of unit for the 730 and 185mm for the 1030.
6. Ensure that the inflow of water is not directed onto the float.
7. Slow radius bends **MUST** be used for every change of direction of the discharge pipework.
8. If the discharge pipework connects to a soil stack, manhole etc. **below the discharge outlet of the tank**, an anti-syphon unit **MUST** be fitted to the highest point of the discharge pipework.

VENTING TO AIR: THE TANK MUST BE VENTED TO AIR (1¼" MIN.) **DO NOT USE A DURGO AIR / ADMITTANCE VALVE.** IF GLASSWASHERS OR COMMERCIAL/INDUSTRIAL DISHWASHERS/WASHING MACHINES ARE USED IT IS RECOMMENDED THAT AT LEAST A 2" VENT IS TAKEN TO AIR. (IF YOU WISH TO DISCUSS YOUR PARTICULAR APPLICATION WITH REGARD TO VENTILATION PLEASE CONTACT OUR TECHNICAL SALES DEPARTMENT.)

MAINTENANCE:

*The DRAINMAJOR 730/1030 should have the lid **REGULARLY** removed for **CLEANING** of the tank and pump*

The DRAINMAJOR DUO is a waste water pumping system to share input from multiple appliances.

IF 1 PUMP FAILS THE OTHER TAKES OVER!

This DUAL unit with "high level alarm" pumps waste water from a Commercial/Industrial sink, wash basin, utility sink or any situation where waste water needs to be collected and pumped to the drainage system.

An important feature of the unit is its high head pumping capability (up to 8 metres) which enables it to handle difficult, awkward or very long discharge pipe runs.



If one pump fails, water flows over central "weir" and activates the other pump.

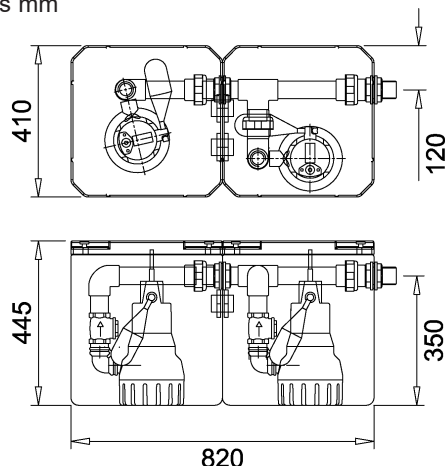
- OFFICES
- WAREHOUSES
- FACTORIES
- SHOPS
- PUBS/CLUBS
- SCHOOLS
- CINEMAS
- THEATRES
- HOSPITALS
- RESTAURANTS

LID EASILY REMOVED FOR REGULAR CLEANING OF PUMP AND TANK

- ✓ DUAL PUMPS WITH HIGH LEVEL ALARM (to monitor water level)
- ✓ WILL PUMP UP TO 8m VERTICALLY (see graph)
- ✓ 10 mm SOLIDS HANDLING CAPACITY
- ✓ MECHANICAL SHAFT SEAL (Silicone Carbide)
- ✓ COMPACT SIZE / EASY TO INSTALL
- ✓ READY TO INSTALL (No commissioning)

The corrosion resistant pump has a mechanical seal which enables the unit to handle mildly diluted chemical in water. This is ideal for handling waste water from printing or photographic processes and laboratory sinks. If using with cleaners/utility sink or hairdressors basins, use an "Inline Strainer" from Pump Technology

Dimensions mm



56 Youngs Industrial Estate, Aldermaston, Berks. RG7 4PW
 Tel: 0118 9821555 Fax: 0118 9821666
 E-mail: support@pumptechnology.co.uk
 Web Site: www.pumptechnology.co.uk

DRAINMAJOR DUO: This consists of twin durable tanks manufactured from polyethylene.

QUALITY: The tank is pigmented throughout with an externally smooth isophthalic polyester gel coat and resin enriched lining.

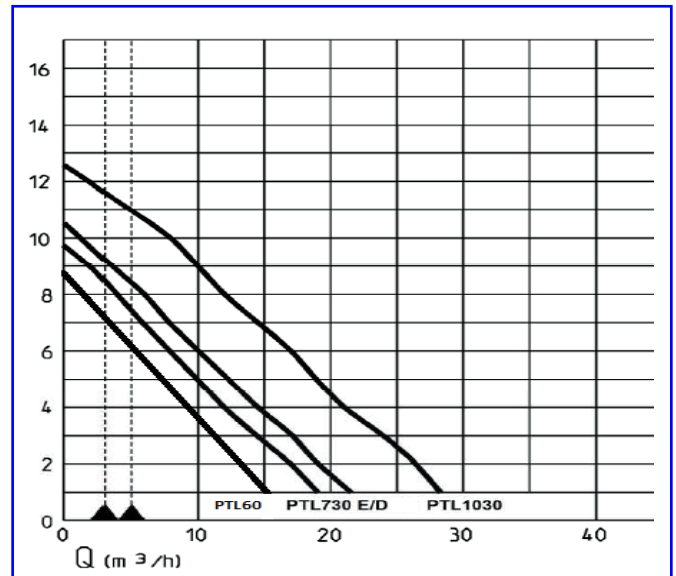
OUTLETS: The tank has a 1½" BSP discharge outlet.

PUMPS X 2: Vertical centrifugal type, single stage for submerged operation, with strainer base, open impeller.

Motor: Fully encapsulated submersible motor with built-in overload/thermal cut-out, watertight (IP68) enclosure, class B insulation. Supplied with built-in level switch.

Fitted with mechanical seal and oil buffer chamber, the pumps will give reliable service for long periods with minimum supervision and maintenance, apart from regular cleaning of the tank and pump strainer.

ALL INVERTS TO BE MADE TO SIDE OF TANK USING TANK CONNECTORS.
1¼" MINIMUM VENT TO AIR REQUIRED.
IF DISHWASHERS, GLASSWASHERS OR WASHING MACHINES ARE USED A 2" VENT IS REQUIRED.



IMPORTANT: This unit is not designed to handle sewage. Please enquire about our packaged sewage pumping systems.

The **DRAINMAJOR DUO** comes complete with a one year warranty.
In the unlikely event of technical difficulties, please ring: **Pump Technology Limited on 0118 9821555**

Technical Data (50 Hz)							
Type	Voltage	P1	P2	F.L.C.	RPM	Overload Protection	Max. Solids Size
PTL 60E	single phase 230 V	0.70kW	0.45kW	3.4A	2600	Incorporated in motor (thermostat)	10mm
PTL60D	3phase 400V	0.75kW	0.60kW	1.3A	2800		10mm
PTL 730E	single phase 230 V	0.83kW	0.50kW	3.9A	2500		30mm
PTL 730D	3-phase 400V	0.85kW	0.60kW	1.4A	2800		30mm
PTL 1030E	single phase 230 V	1.37kW	0.98kW	6.0A	2700		30mm
PTL1030D	3-phase 400V	1.36kW	1.06kW	2.4A	2740		30mm

INSTALLATION DRAINMAJOR DUO *Installers please note. (use solvent weld or copper pipe)*

1. Remove lid from tank, check pump is correctly positioned and connecting pipework has not been damaged in transit.
2. Check that the pumps are correctly positioned in the tank and that the union is tightly connected so that the pump does not move on its mountings impeding the float action.
3. All inverts should be brought into the side of the tank by drilling a hole and using an appropriate tank connector.
4. All inverts should be brought into the tank (using tank connectors) at the highest possible level from the floor - i.e. no lower than 120 mm from base of unit for the PTL 60, 155mm for the PTL730 and 185mm for the PTL1030.
5. Preferably no connections through the lid as this inhibits easy removal of the lid for cleaning tank. (Note: tank **MUST** be positioned in such a way that lid can be removed easily to allow access for tank interior and pump cleaning.)
6. Ensure that the inflow of water is not directed onto the float mechanism.
7. Slow radius bends **MUST** be used for every change of direction of the discharge pipework.
8. If the discharge pipework connects to a soil stack, manhole etc. **below the discharge outlet of the tank**, an anti-syphon unit **MUST** be fitted to the highest point of the discharge pipework.

VENTING TO AIR: THE TANK MUST BE VENTED TO AIR (1¼" MIN.) **DO NOT USE A DURGO AIR / ADMITTANCE VALVE.** IF GLASSWASHERS OR COMMERCIAL/INDUSTRIAL DISHWASHERS/WASHING MACHINES ARE USED IT IS RECOMMENDED THAT AT LEAST A 2" VENT IS TAKEN TO AIR. (IF YOU WISH TO DISCUSS YOUR PARTICULAR APPLICATION WITH REGARD TO VENTILATION PLEASE CONTACT OUR TECHNICAL SALES DEPARTMENT.)

MAINTENANCE:

The DRAINMAJOR DUO should have the lid REGULARLY removed for CLEANING of the Tank and Pump

DRAINING

Waste Water Pumping System using Dual pumps

The Solution for for Commercial Kitchens with Multiple Sinks, Dishwashers and Glasswashers where there is no access to conventional gravity fed drains.

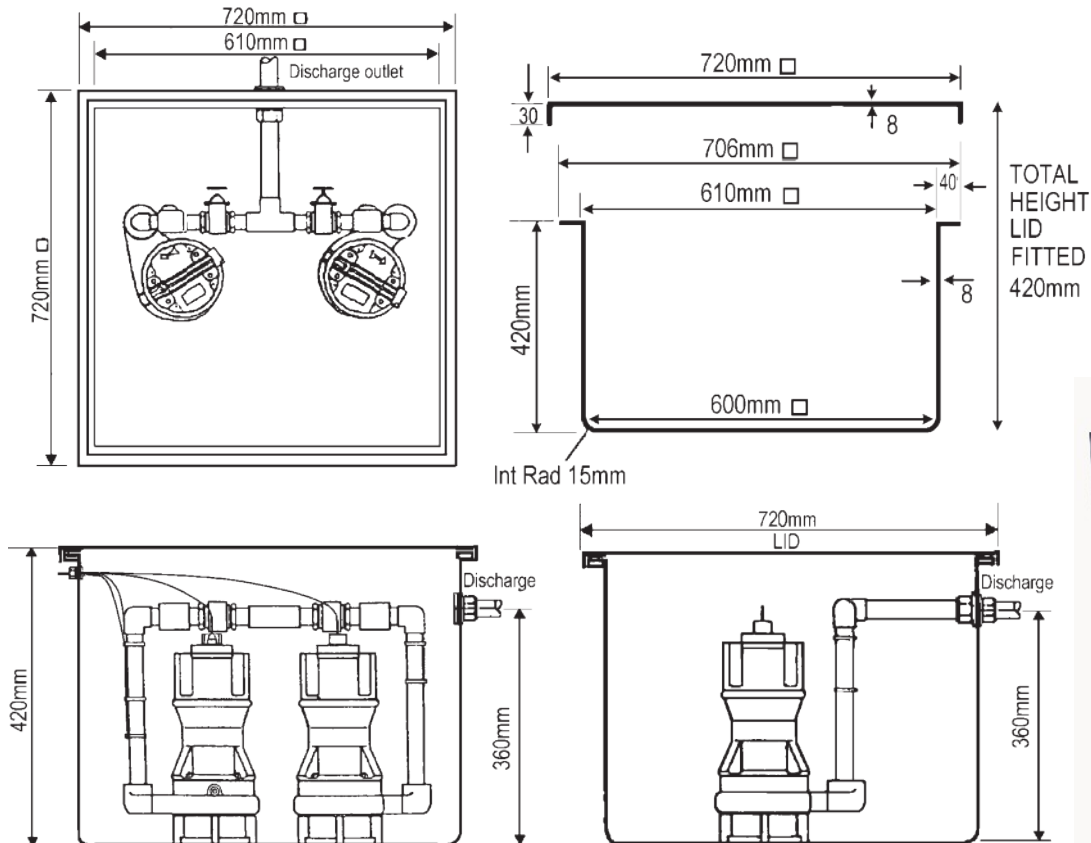
This unit is **SPECIALLY DESIGNED** to pump waste water from commercial/industrial kitchen sinks (with waste disposal units), commercial dishwashers, glasswashers, washing machines and utility/cleaners sinks. The system is **DESIGNED TO HANDLE VERY HOT WATER** from commercial pumped appliances (i.e. dishwashers using 'H' version pumps).

The **DRAIN-KING 730/1030** will pump waste water containing solids up to 30mm in size such as food particles. The pump has been specifically designed to handle stringy and fibrous waste in suspension.

- RESTAURANTS
- PUBS/CLUBS
- FACTORIES
- SHOPS
- WAREHOUSES
- SCHOOLS
- CINEMAS
- THEATRES
- HOSPITALS
- OFFICES

FEATURES INCLUDE

- ✓ PUMPS UP TO 8m/10m VERTICALLY
- ✓ 30 mm SOLIDS HANDLING CAPACITY
- ✓ RATED FOR CONTINUOUS OPERATION
- ✓ MECHANICAL SEAL (DOUBLE SILICONE CARBIDE)
- ✓ COMPLETE, READY TO INSTALL
- ✓ EASY INSTALLATION
- ✓ CONTROL PANEL (C/W HIGH LEVEL ALARM)



CONTROL GEAR:
The Twin Pump System has a Control Panel that gives:

- duty changeover
- standby
- assist
- high level alarm and volt free contacts for adding a remote alarm facility.



56 Youngs Industrial Estate, Aldermaston, Berks. RG7 4PW
Tel: 0118 9821555 Fax: 0118 9821666
E-mail: support@pumptechnology.co.uk
Web Site: www.pumptechnology.co.uk

DRAIN-KING: This consists of a durable tank manufactured from polyester/glass fibre (GRP) laminate, fully rigged with internal pipework, non return valves etc. for Single or Twin Pumps.

QUALITY: The tank is pigmented throughout with an externally smooth isophthalic polyester gel coat and resin enriched lining.

DISCHARGE OUTLETS: Have a 2" Male BSP male thread outlet.

INVERTS: See Installation Notes.

PUMP Type: Vertical single-stage, submersible with free inlet, volute casing with 1½" (female) pressure branch, open centrifugal impeller, (30 mm solids handling capacity).

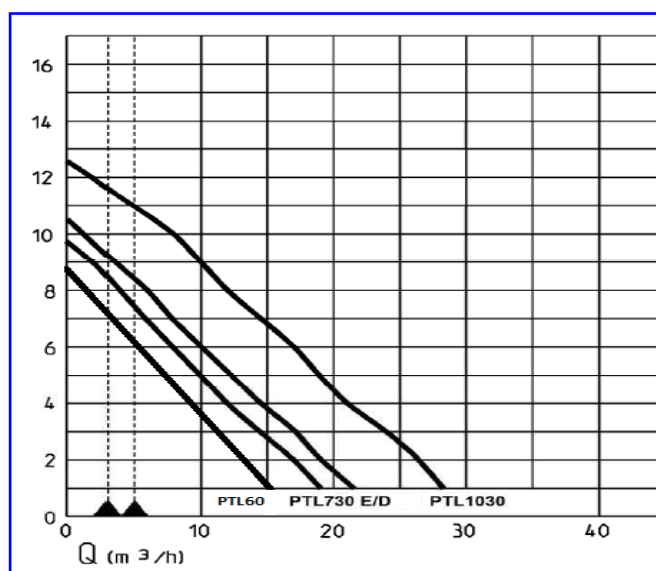
Motor: Submersible, oil filled motor, type of enclosure IP68, insulation class B, starting via plug or automatic circuit.

Materials: Spiral casing in cast iron - Terminal board, hood, impeller, wear plate made of GRP. Motor casing and shaft of stainless steel, supply through rubber insulated flexible cable.

Bearings: Common shaft for pump and motor, mounted in ball bearings.

Shaft Seal: Silicon carbide mechanical seal, oil chamber and double shaft seal towards the motor section, safe to run dry.

PTL 730 'H' version available for extremely hot water. Check specifications with our Technical Department.



The **DRAIN-KING** comes complete with a one year warranty. In the unlikely event of technical difficulties, please ring:

Pump Technology Limited on 0118 9821555

IMPORTANT: This unit is not designed to handle sewage. Please enquire about our packaged sewage pumping systems.

Technical Data (50 Hz)							
Type	Voltage	P1	P2	F.L.C.	RPM	Overload Protection	Max. Solids Size
PTL 60E	single phase 230 V	0.70kW	0.45kW	3.4A	2600	Incorporated in motor (thermostat)	10mm
PTL60D	3phase 400V	0.75kW	0.60kW	1.3A	2800		10mm
PTL 730E	single phase 230 V	0.83kW	0.50kW	3.9A	2500		30mm
PTL 730D	3-phase 400V	0.85kW	0.60kW	1.4A	2800		30mm
PTL 1030E	single phase 230 V	1.37kW	0.98kW	6.0A	2700		30mm
PTL1030D	3-phase 400V	1.36kW	1.06kW	2.4A	2740		30mm

Depending on the working environment of the **DRAIN-KING**, it may be advisable to fit a grease trap/interceptor. Please seek advice from our technical department. **Phone 0118 9821555 for further information.**

INSTALLATION **DRAIN-KING** *Installers please note. (use solvent weld or copper pipe)*

COMMISSIONING: It is **ESSENTIAL** that a Twin Pump System is commissioned by Pump Technology engineers after installation. Please discuss details with our Technical Department.

1. Remove lid from tank, check pump is correctly positioned and connecting pipework has not been damaged in transit.
2. All inverts should be brought into the tank by drilling a hole and using an appropriate tank connector.
3. Preferably no connections through the lid as this inhibits easy removal of the lid for cleaning tank. (Note: tank should be positioned in such a way that lid can be removed easily for maintenance.)
4. All inverts should be brought into the tank (using tank connectors) at the highest possible level from the floor - i.e. no lower than 260 mm from centre of hole to floor.
5. Ensure that the inflow of water is not directed onto the float mechanism.
6. Slow radius bends **MUST** be used for every change of direction of the discharge pipework.
7. If the discharge pipework connects to a soil stack, manhole etc. below the discharge outlet of the tank, an anti-siphon unit **MUST** be fitted to the highest point of the discharge pipework.
8. The tank should be positioned so that the lid can be removed for easy access to pump and tank interior for cleaning.

VENTING TO AIR: THE TANK MUST BE VENTED TO AIR (1¼" MIN.). **DO NOT USE A DURGO / AIR ADMITTANCE VALVE.** IF GLASSWASHERS OR COMMERCIAL/INDUSTRIAL DISHWASHERS/WASHING MACHINES ARE USED IT IS RECOMMENDED THAT AT LEAST A 2" VENT IS TAKEN TO AIR. (IF YOU WISH TO DISCUSS YOUR PARTICULAR APPLICATION WITH REGARD TO VENTILATION PLEASE CONTACT OUR TECHNICAL SALES DEPARTMENT.)

MAINTENANCE: The **DRAIN-KING** should have the lid **REGULARLY** removed for **CLEANING** of the Tank and Pump

WASTE WATER SUBMERSIBLE PUMPS

Pump Technology **STOCK** a comprehensive range of single and three phase waste water pumps.

Contact our Technical helpline for expert advice backed by practical experience.

- Domestic Applications
- Industrial Applications
- Very Hot Water
- Chemical Environments



Ideal for sumps taking water from kitchens, basements, lift wells, fountains or reservoirs.

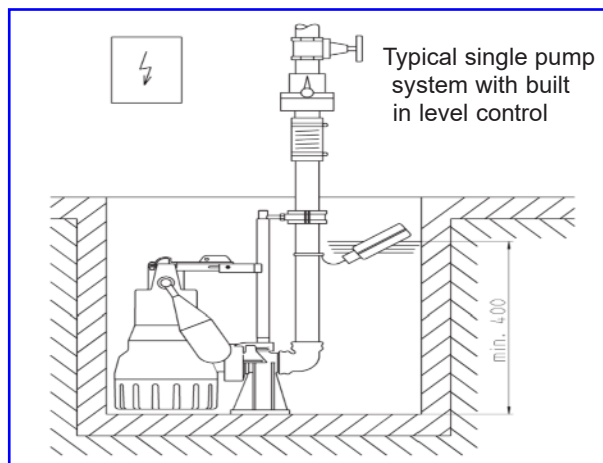
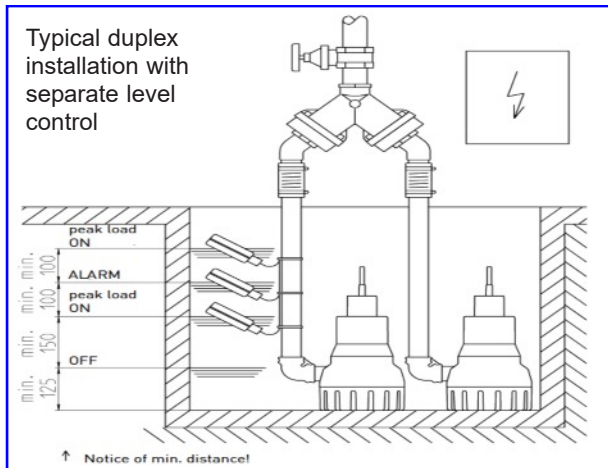
The PTL range is especially suited for contaminated water and similar harsh environments where corrosion is a problem.

These high quality products are built with the essential parts to prolong life, requiring minimal supervision and maintenance.

Remember: Quality and reliability isn't expensive - **it's priceless.**

INSTALLATION

Many installation options are possible - for instance:-



All pumps can be fitted with our 'Guide Rail' system for ease of cleaning and maintenance.

56 Youngs Industrial Estate, Aldermaston, Berks. RG7 4PW

Tel: 0118 9821555 Fax: 0118 9821666

E-mail: support@pumptechnology.co.uk

Web Site: www.pumptechnology.co.uk

SUBMERSIBLE SEWAGE PUMPS

Pump Technology offer and STOCK a comprehensive range of these pumps.

We can provide the right solution for challenging pumping applications.

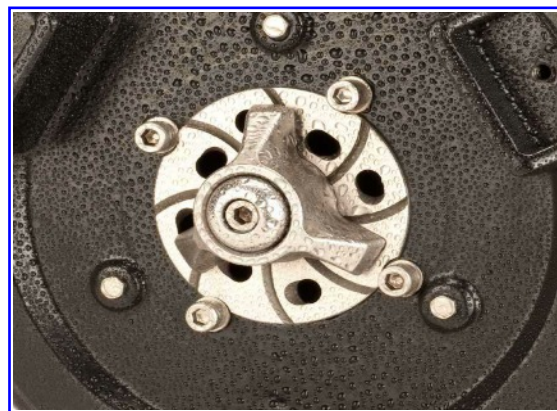
Contact our Technical helpline for Full Specifications !

MULTICUT SUBMERSIBLE PUMPS



- Sewage and Waste Disposal solution
- Holiday/Caravan Parks. Rural or remote situations
- Estates or individual housing projects
- Small bore pipework over long distances and difficult or uneven ground conditions
- Combined cutting and pumping operation for trouble free low-cost effluent disposal.

- **PUMPS UP TO 50M HEAD**
- **BUILT-IN MOTOR PROTECTION**
- **EXTERNAL ADJUSTABLE CUTTING SYSTEM**
- **CUTTER SYSTEM DESIGNED FOR HIGH PERFORMANCE**



COMBINED IMPELLOR & CUTTER PLATE
TO IMPROVE SUCTION PERFORMANCE



VORTEX SUBMERSIBLE PUMPS

This range of pumps is ideal for pumping waste water containing solid matter or domestic sewage such as waste from toilets, washing machines, etc.

Pumps from the range make an ideal Sump Pump.

Built-in features make these market leading pumps robust and long lived.

56 Youngs Industrial Estate, Aldermaston, Berks. RG7 4PW

Tel: 0118 9821555 Fax: 0118 9821666

E-mail: support@pumptechnology.co.uk

Web Site: www.pumptechnology.co.uk

The EFFLU MAXI range

Powerful Floor Mounted Sewage Disposal and Waste Water Pumping Systems that can be relied on!

APPLICATIONS

- SHOPS & OFFICES
- FACTORIES
- CINEMAS & THEATRES
- HOSPITALS
- HOTELS & RESTAURANTS
- PUBS, CLUBS & BARS

These Single & Twin Pump systems are designed specifically for commercial and industrial situations where toilets are to be used by a number of people and where domestic macerators/pumping systems are totally unsuitable.

The capital cost of purchasing a floor-mounted sewage pumping station will be more economical than the maintenance cost of using several domestic pumping systems.

The **EFFLU MAXI** range is ideal in situations where one or several toilets have to be fitted in one location (together with hand basins, urinals, kitchens and utility sinks).

The toilets can be manifolded together and brought into the pumping station, which can be sited on the same level (1 in 40 fall), lower level or on the floor below.

EFFLU MAXI systems pump in 3" or 4" discharge pipework using pumps with large free passage that ensures freedom from blockages.

The unit can be supplied as a single or twin pump systems, it will pump to a vertical head of 6 -10 metres depending on the system used.

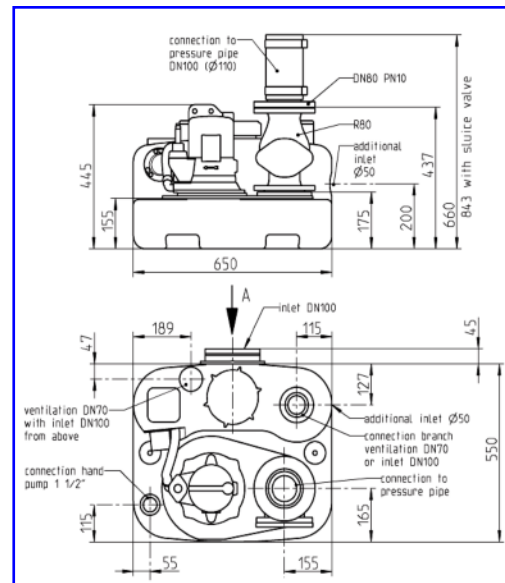
DISCHARGE PIPEWORK:

3" uPVC Class C or D solvent weld (or copper, iron etc. as required)

VENT: 70mm vent to AIR/ATMOSPHERE is required a **DURGO / AIR ADMITTANCE VALVE MUST NOT BE USED**) see **Microvent** if venting to air is a problem.



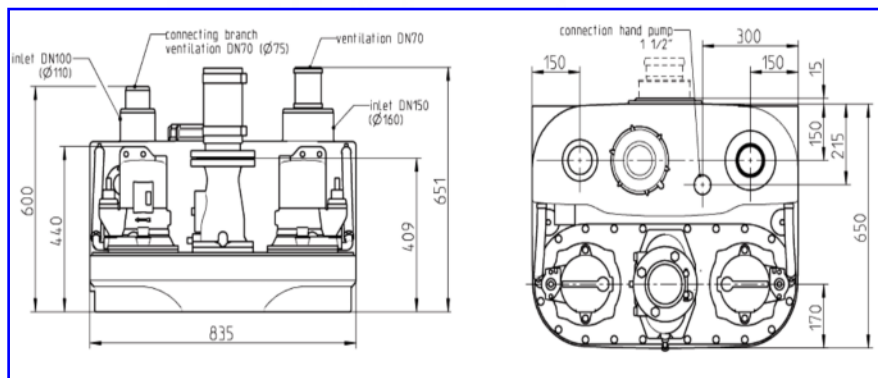
"EFFLU MAXI" 80 SINGLE PACKAGED SEWAGE PUMPING UNIT WITH FREEFLOW VORTEX PUMP



Dimensions mm



"EFFLU MAXI" TWIN PACKAGED SEWAGE PUMPING UNIT WITH FREEFLOW VORTEX PUMP



Dimensions mm

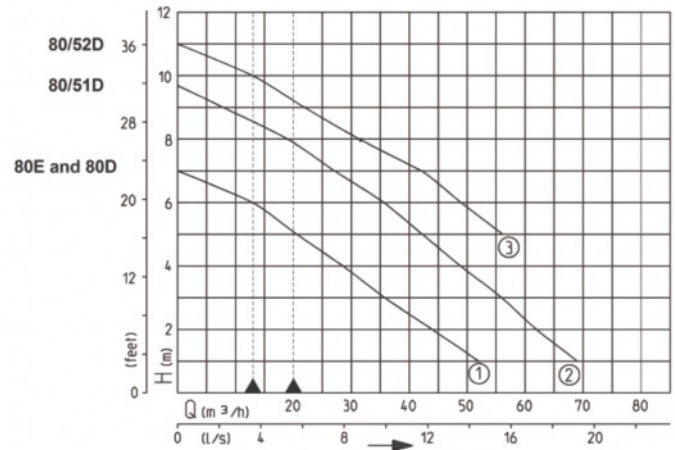
TECHNICAL DATA

The EFFLU MAXI:

Consists of a Polyethylene tank complete with a discharge non return valve and couplings for all invert, discharge & vent connections including non return valve.

Both systems have a Control Panel with overload relay, alarm device, high level alarm and volt free contacts for remote alarm.

The twin pump unit is equipped with a Control Panel giving duty changeover, duty assist and duty standby on the pumps. Install in a dry area.



EFFLU MAXI 80 Single

Type	Tank Capacity litres	Floor to Centre Inlet mm	Inlet Flange	Weight kg	Discharge Size	Vent Pipe mm
80 E Single	50	180	DN100	64	3" or 4"	70
80 D Single	50	180	DN100	64	3" or 4"	70

Type	Supply	Voltage	Motor Rating kw input	Motor Rating kw output	Current Amperes	RPM
80E	1-phase	230	1.55	1.09	6.9	1440
80D	3-phase	400	1.25	87	2.2	1390

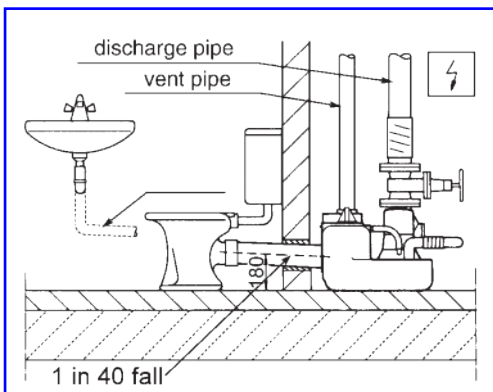
Also available with 250mm floor to centre inlet if required

EFFLU MAXI 80 Twin

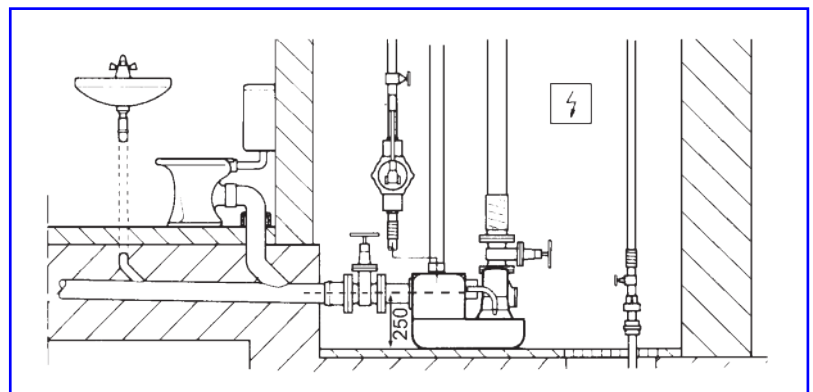
Type	Tank Capacity litres	Floor to Centre Inlet mm	Inlet Flange	Weight kg	Discharge Size	Vent Pipe mm
80 D or E twin	100	250	DN100	140	3" or 4"	70
80/51 D twin	100	250	DN100	140	3" or 4"	70
80/52 D twin	100	250	DN100	140	3" or 4"	70

Type	Supply	Voltage	Motor Rating kw input	Motor Rating kw output	Current Amperes	RPM
80 twin	1-phase	230	1.55	1.09	6.9	1442
80 twin	3-phase	400	1.30	1.10	2.8	1451
80/51 twin	3-phase	400	2.20	1.70	3.9	1405
80/52 twin	3-phase	400	3.00	2.20	5.1	1363

Also available with 180mm and 315mm floor to centre inlet if required



MOUNTING ARRANGEMENTS
EFFLU MAXI 80 SINGLE PUMP



MOUNTING ARRANGEMENTS
EFFLU MAXI 80 TWIN PUMP

Due to a policy of continuous product improvement we reserve the right to alter specifications without notice.

The EFFLU MAXI™ 120 Twin Pump

Sewage disposal units with tough power that can be relied on!

**"EFFLU MAXI" 120 TWIN
PACKAGED SEWAGE
PUMPING UNIT WITH
FREEFLOW VORTEX PUMP**

APPLICATIONS

- PUBS, CLUBS & BARS
- HOTELS & RESTAURANTS
- FACTORIES
- SHOPS - OFFICES
- CINEMAS & THEATRES
- HOSPITALS

These systems have a large capacity 350 Ltr. tank and are designed specifically for commercial and industrial situations where toilets are to be used by a number of people and where domestic macerators / pumping systems are totally unsuitable.

The capital cost of purchasing a floor-mounted sewage pumping station will be more economical than the maintenance cost of using domestic pumping systems.

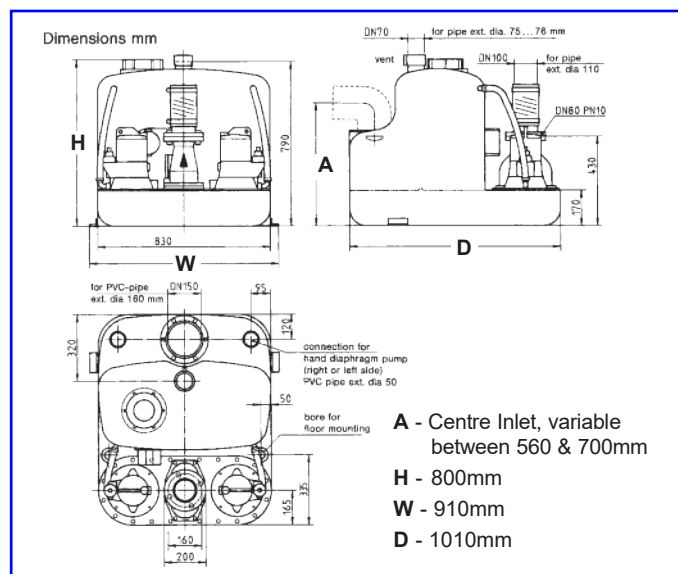
The **EFFLU MAXI** 120 range is ideal in situations where several toilets have to be fitted in one location (together with hand basins, urinals, kitchens and utility sinks).

The toilets can be manifolded together and brought into the pumping station, which can be sited on the same level, lower level or on the floor below.

EFFLU MAXI systems pump in 4" discharge pipework using non-clogging pumps with large free passage that ensures freedom from blockage.

The EFFLU MAXI 120 will pump to a vertical head of 6-18 metres depending on the system used.

DISCHARGE PIPEWORK: 4" uPVC Class C or D solvent weld (or copper, iron etc. as required)
VENT: 70mm vent to AIR/ATMOSPHERE is required (a **DURGO / AIR ADMITTANCE VALVE** **MUST NOT BE USED**) see **Microvent** if venting to air is a problem.



56 Youngs Industrial Estate, Aldermaston, Berks. RG7 4PW
Tel: 0118 9821555 Fax: 0118 9821666
E-mail: support@pumptechnology.co.uk
Web Site: www.pumptechnology.co.uk

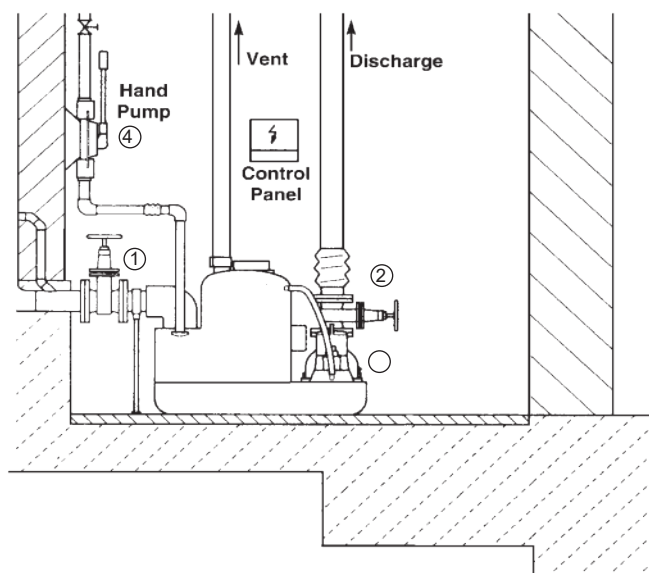
TECHNICAL DATA

EFFLU MAXI 120 Twin

Type	Tank Capacity litres	Floor to Centre Inlet mm	Inlet Flange	Weight kg	Discharge Size	Vent Pipe mm
014	350	560 750	DN150	145	4"	70
514	350	560 750	DN150	147	4"	70
524	350	560 750	DN150	149	4"	70

Type	Supply	Voltage	Motor Rating kw input	Motor Rating kw output	Current Amperes	RPM
014E	1-phase	230	1.55	1.09	6.9	1442
014	3-phase	400	1.30	1.10	2.8	1451
514	3-phase	400	2.20	1.70	3.9	1405
524	3-phase	400	3.00	2.20	5.1	1363

NOTE: Motor Protection is included in the control panel



MOUNTING ARRANGEMENTS EFFLU MAXI 120 TWIN PUMP

Inlet Connection -
100mm clamped fitting flange

Discharge Connection -
100mm rubber sleeve and hose clamps connected to spigot flange.

It is recommended that a sluice (gate) valve) be fitted on the inlet and discharge side of the tank. A hand pump can be fitted if required.

Please contact our Technical Department about the use of grease traps if kitchen waste is to be pumped.

KEY

1. Sluice Gate Valve (inlet) - *optional*
2. Sluice Gate Valve (discharge) - *optional*
3. Reflux Valve Non Return - *supplied*
4. Hand Diaphragm Pump - *optional*

A feature of the EFFLU MAXI 120 is that the twin pumps have alternating duty cycles and if required they will operate on a duty/backup system to deal with peak flow conditions.

The EFFLU MAXI 120:

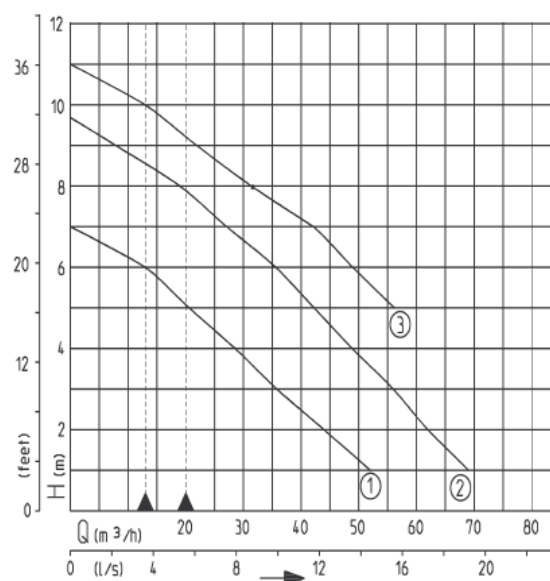
Consists of a Polyethylene tank complete with a discharge non return valve and couplings for all invert, discharge & vent connections including reflux (non return valve).

Both systems have a Control Panel with overload relay, high level alarm, lamp for rotation control and volt free contacts for connecting a remotely sited alarm device. Install Control Panel in dry area.

524D

514D

014D



The EFFLU GRINDER

High Head pumping unit will pump up to 20 metres vertically.

APPLICATIONS

- SHOPS & OFFICES
- FACTORIES
- CINEMAS & THEATRES
- HOSPITALS
- HOTELS & RESTAURANTS
- PUBS, CLUBS & BARS

These systems are designed specifically for commercial and industrial situations where toilets are to be used by a number of people and where domestic macerators/pumping systems are totally unsuitable.

This unit has been designed specially for the disposal of sewage on difficult applications where small bore pipework is necessary or high pumping heads required, due to static height or long pumping main.

The **EFFLU GRINDER** range is ideal in situations where one or two toilets have to be fitted in one location (together with hand basins, urinals, kitchens and utility sinks).

The toilets can be manifolded together and brought into the pumping station, which can be sited on a lower level, 1 in 40 fall, or on the floor below.

EFFLU GRINDER systems pump in 2" discharge pipework using a powerful cutter pump.

DISCHARGE PIPEWORK:

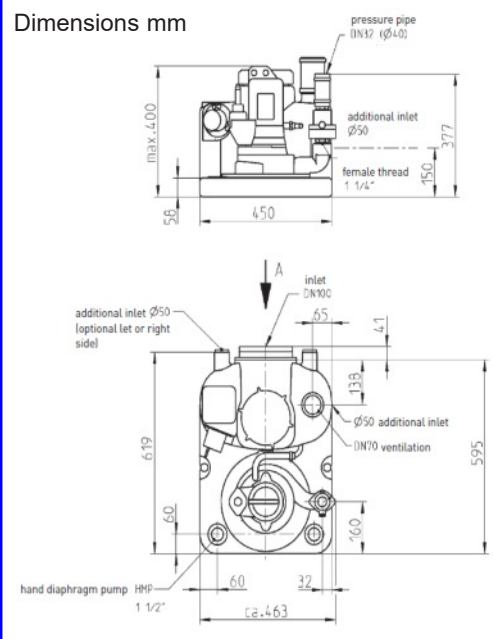
2" uPVC Class C or D solvent weld (or copper, iron etc. as required)

VENT: 70mm vent to AIR/ATMOSPHERE is required (a **DURGO / AIR ADMITTANCE VALVE MUST NOT BE USED**) see MICROVENT if venting to air is a problem.

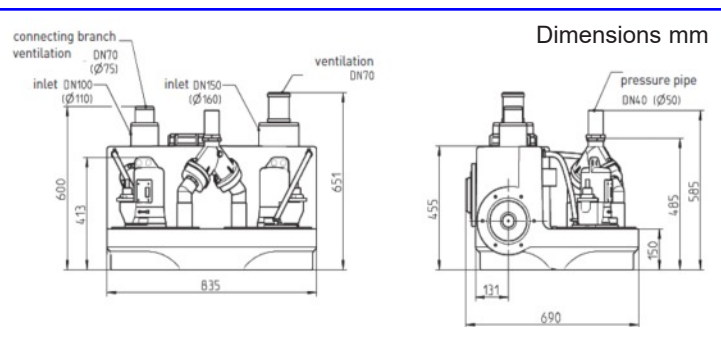


"EFFLU GRINDER"
SINGLE PACKAGED SEWAGE
PUMPING UNIT
WITH POWERFUL
CUTTER PUMP

Dimensions mm



"EFFLU GRINDER"
TWIN PACKAGED
SEWAGE PUMPING UNIT
WITH POWERFUL
CUTTER PUMP



56 Youngs Industrial Estate, Aldermaston, Berks. RG7 4PW

Tel: 0118 9821555 Fax: 0118 9821666

E-mail: support@pumptechnology.co.uk

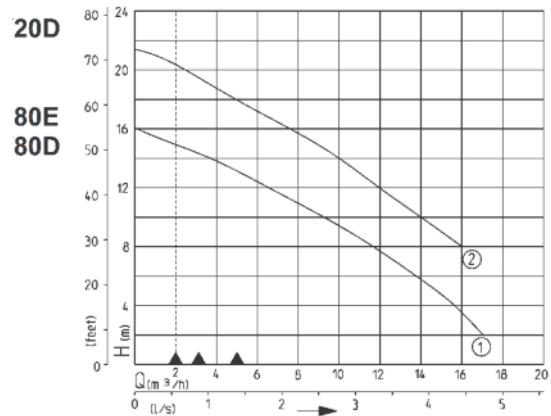
Web Site: www.pumptechnology.co.uk

TECHNICAL DATA

The EFFLU GRINDER:

Consists of a Polyethylene tank complete with a discharge non return valve and couplings for all invert, discharge & vent connections including reflux (non return valve). The entire unit is damp and flood-proof and thus ideally suited to placing in unventilated areas or basements subject to accidental flooding.

It incorporates a Control Panel with overload relay, alarm device, high level alarm and volt free contacts for remote alarm. **Install Control Panel in dry area.**



Type	Tank Capacity litres	Floor to Centre Inlet mm	Inlet Flange	Weight kg	Discharge Size	Vent Pipe mm
Single	38	180 250	DN100	42	2"	70
Twin	115	180 250	DN100	77	2"	70

Type	Supply	Voltage	Motor Rating kw input	Motor Rating kw output	Current Amperes	RPM
82E	1-phase	230	1.70	1.14	7.5	1442
82	3-phase	400	1.65	1.24	2.8	1451
20	3phase	400	2.30	1.85	3.9	1405

DESCRIPTION

Pump: Single stage vertical centrifugal pump, with open 3-blade impeller, horizontal 1½" flanged discharge branch, and adjustable Multicut cutting system.

Shaft/Bearings: Combined pump/motor shaft, protected against contact with pumped liquid, and rotating in grease-packed ball bearings.

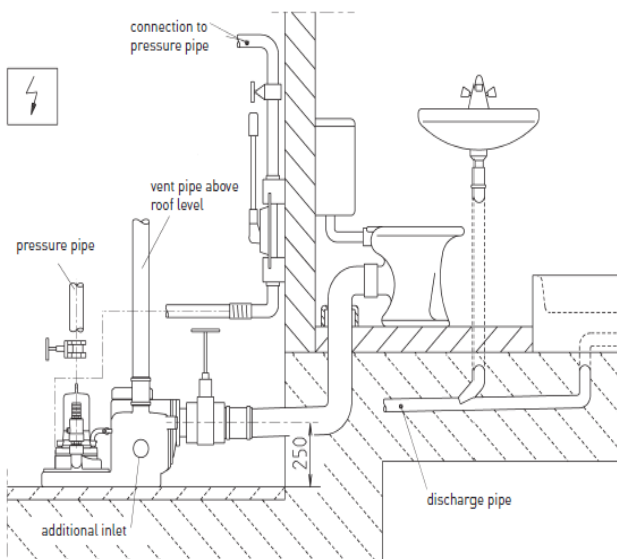
Shaft seal: Oil-filled seal chamber between pump and stator casing with wear-resistant silicone carbide primary seal with dry running properties and duplex lip seal as secondary seal.

Motor: Submersible motor with "dry" type stator windings class F insulation, watertight cast iron enclosure (IP 68) supplied with multicore flexible cable with polychloroprene outer sheath. The pumps are also available with explosion-proof motors (EEx dII BT4) in accordance with German specification V.D.E. 0171.

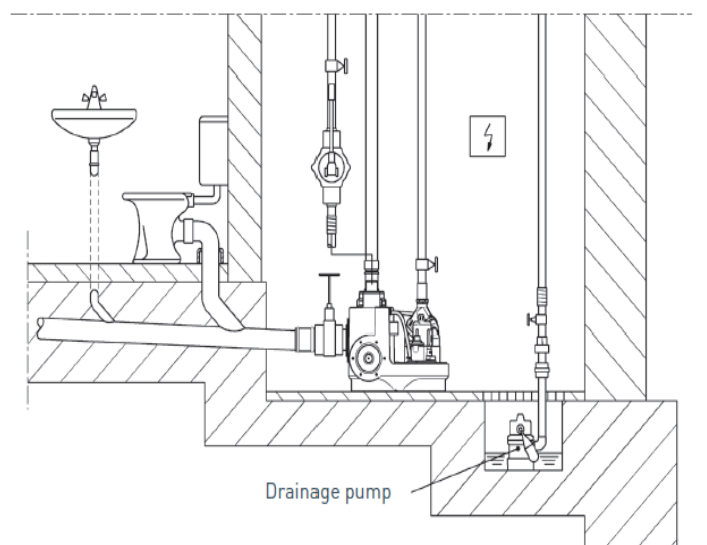
Materials: Cast iron pump and motor casings and impeller, corrosion protected shaft (no contact with pumped liquid) stainless steel hardened (HRC 57) cutting system.

Maintenance is extremely simple: the tank has a top mounted inspection/cleaning aperture and, if necessary, the pumping unit can be removed/replaced in minutes and without disturbing the tank assembly.

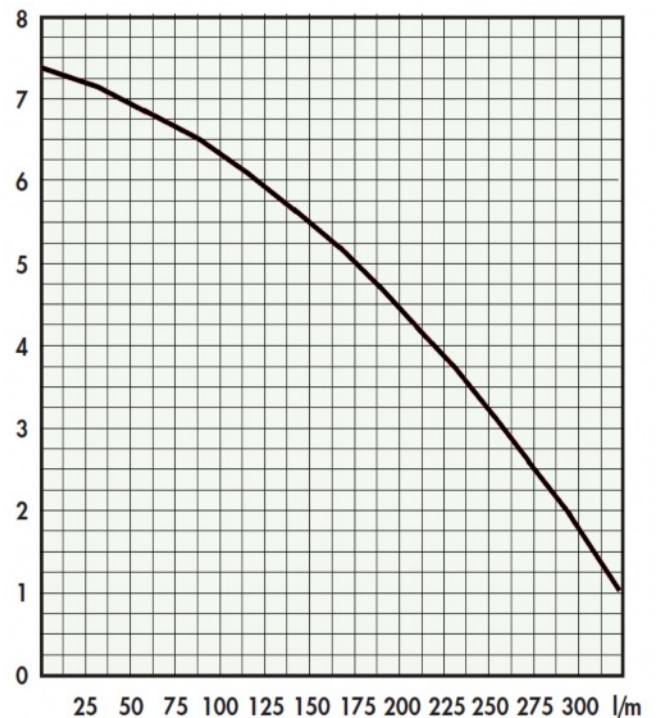
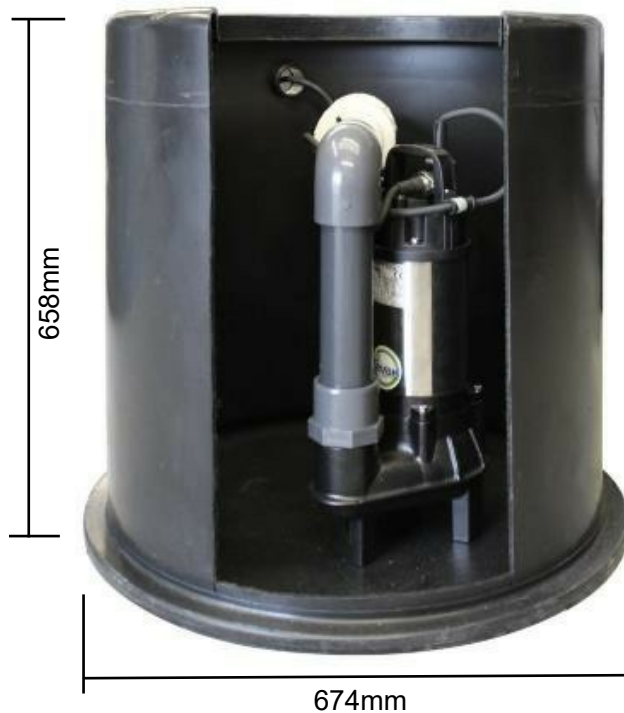
SINGLE



TWIN



MINIMATIC SEWAGE PUMP STATION



Pump:

Cast iron/stainless steel construction.
 50mm (2") solids handling capacity
 Coolant filled motor.
 Mechanical seal.
 10 Meter cable.
 Max 6 Meter lift.
 Max flow 5 L/sec
 Float switch as standard

Tank:

Polyethylene tank. 160L capacity.
 Screw down lid (Pedestrian rated)
 1 x 110mm/160mm inlet seal
 to allow inlet to be drilled on site.
 40mm cable duct.
 2" internal pipe work - 2" non-return valve
 2" quick release coupling - 2" cable duct
 Special audible/visual high level control box.

The **PTL Minimatic Sewage Pump Station** is suitable for domestic sewage pumping installations where gravity flow is not available. It can also be used for a variety of drainage applications.

It is ideal for extensions, garden rooms and similar small applications and is designed for fast, easy installation.

This unit is particularly suitable when water or sewage is collected at a lower level than the main sewer or a septic tank system and requires pumping uphill into these.

Everything required for the pump station is included, so the installer only needs to supply the pipework to and from the station, plus any fittings.

The **PTL Minimatic Sewage Pump Station** features a high spec. submersible pump with 50mm solid handling for optimum efficiency and peace of mind.

THE PUMPMATIC RANGE

A BESPOKE, BELOW GROUND PUMP SYSTEM DESIGNED AND ASSEMBLED TO SUIT YOUR REQUIREMENTS.



The various versions of the PUMPMATIC range shown here are **EXAMPLES ONLY**. There are dozens of pumps which can be used in each tank (depending on application).

The System would comprise of:-

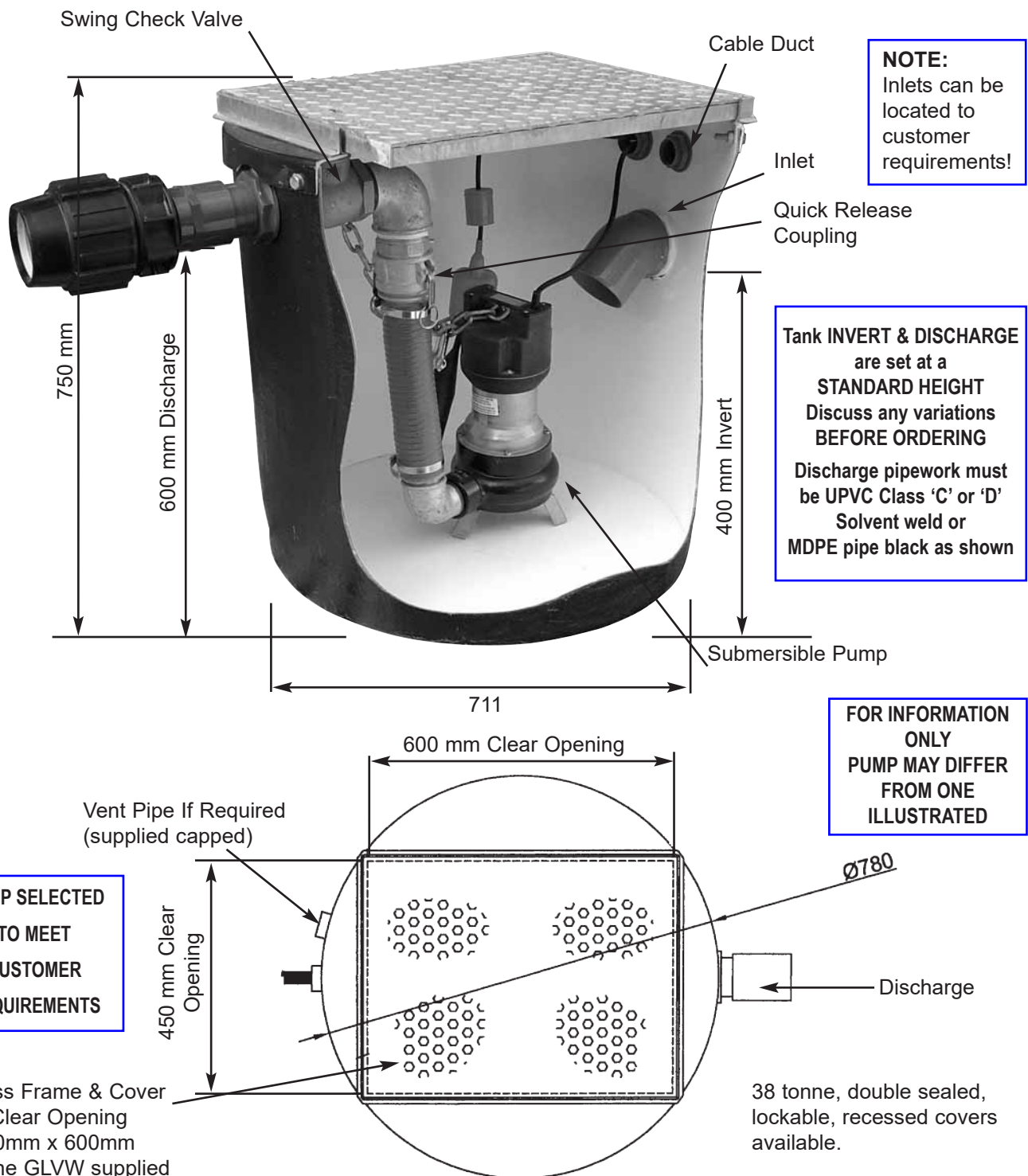
- **Pump Chamber** - Sized according to duty, holding requirements, building regulations, etc.
- **Pumps** - Single or Twin operation selected for duty, type of waste, distance and head.
- **Control Panel, Float Switches or probes & Alarms** - depending on requirements.
- **Access Cover** - Pedestrian/Vehicle weight or Double Sealed/lockable

Questions we might ask to get the right system for your application:-

- Is the application Domestic or Commercial?
- What will the system have to cope with? (whole property, annexe etc.)
- How many sinks, toilets, wash basins, washing machines, etc.
- Head and horizontal distance required to be pumped to main drains.
- Power supply available 240v or 3 Phase.



PUMPMATIC 75/750 Packaged Sewage Pumping System (single pump)



56 Youngs Industrial Estate, Aldermaston, Berks. RG7 4PW

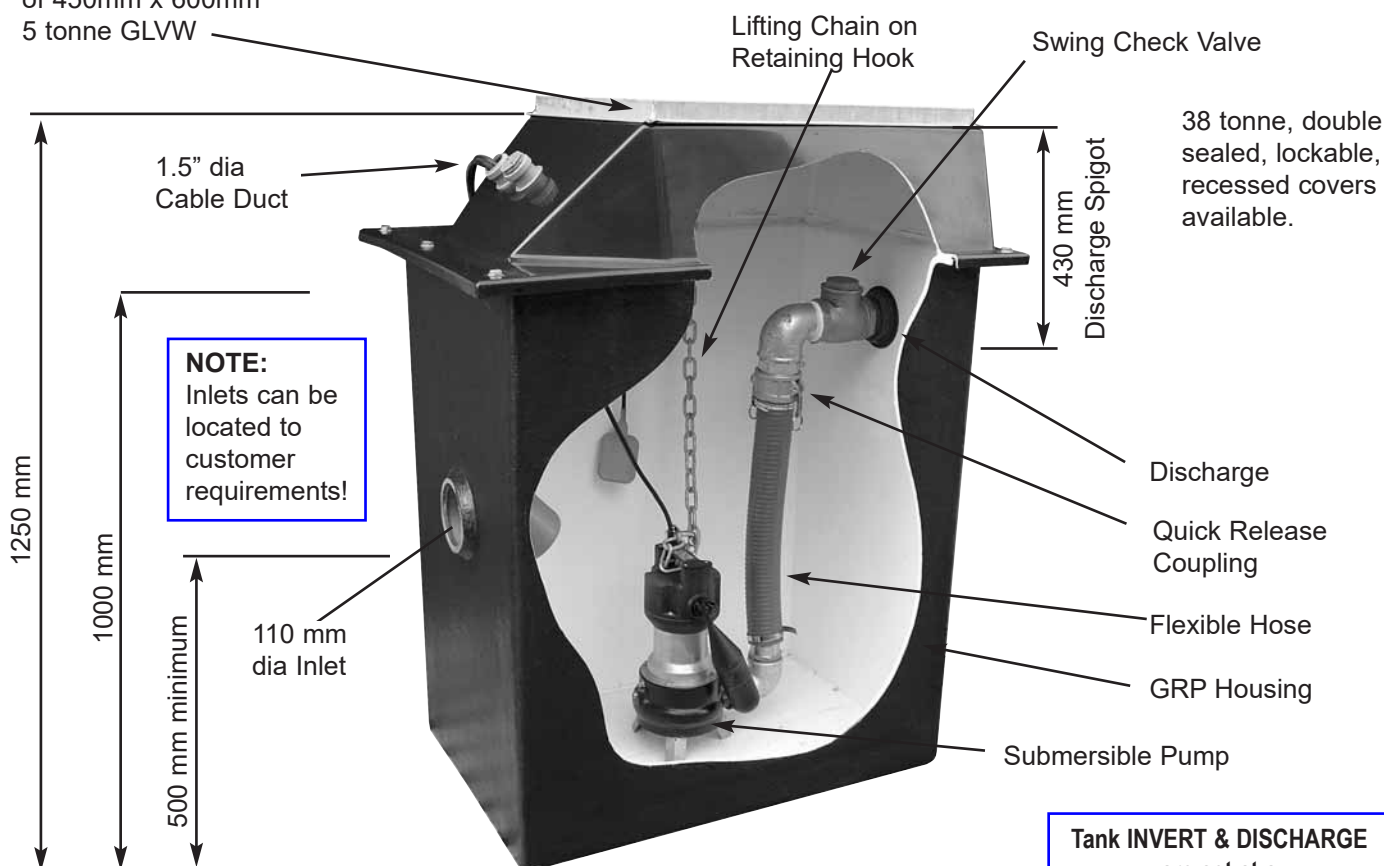
Tel: 0118 9821555 Fax: 0118 9821666

E-mail: support@pumptechnology.co.uk

Web Site: www.pumptechnology.co.uk

PUMPMATIC 100 Packaged Sewage Pumping System

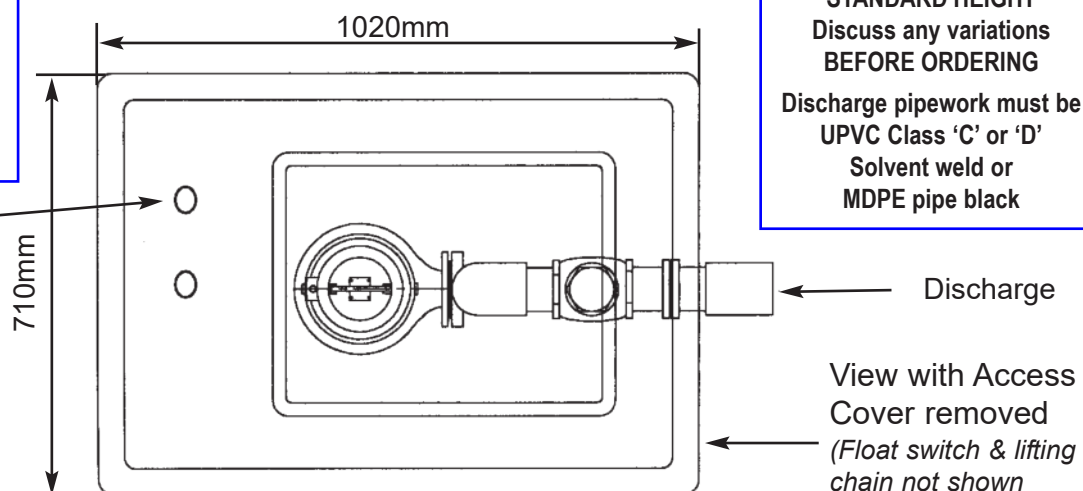
Access Frame & Cover
with Clear Opening
of 450mm x 600mm
5 tonne GLVW



FOR INFORMATION ONLY
PUMP MAY DIFFER FROM ONE ILLUSTRATED

Extra Connection fitted for Vent Pipe

PUMP SELECTED TO MEET CUSTOMER REQUIREMENTS



Tank INVERT & DISCHARGE are set at a STANDARD HEIGHT
Discuss any variations BEFORE ORDERING

Discharge pipework must be UPVC Class 'C' or 'D' Solvent weld or MDPE pipe black

Due to a policy of continuous product improvement we reserve the right to alter specifications without notice.

56 Youngs Industrial Estate, Aldermaston, Berks. RG7 4PW

Tel: 0118 9821555 Fax: 0118 9821666

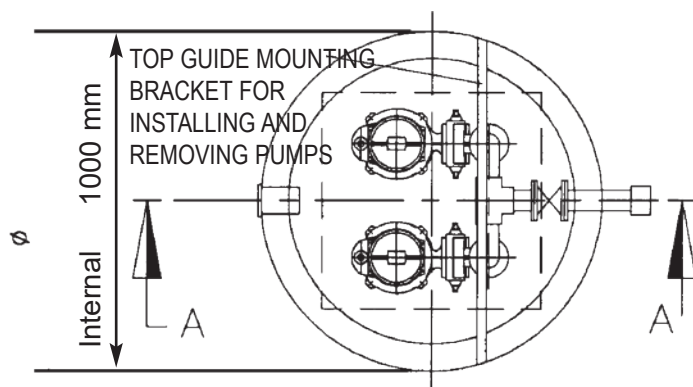
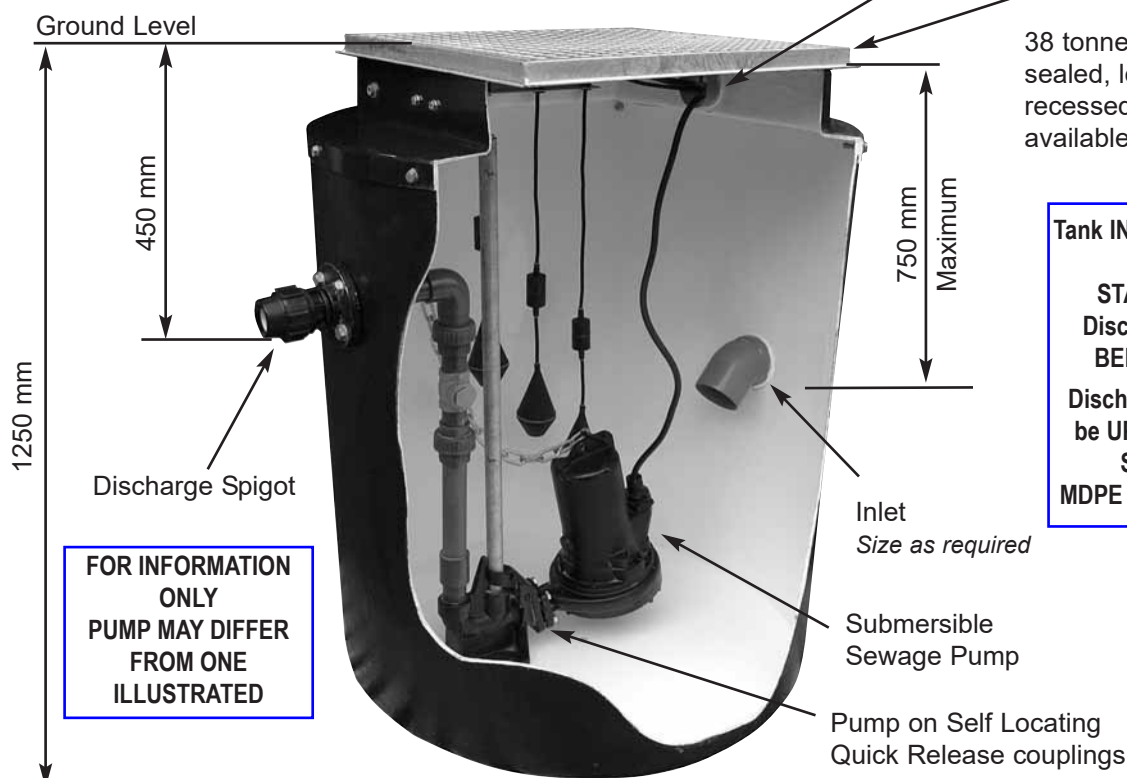
E-mail: support@pumptechnology.co.uk

Web Site: www.pumptechnology.co.uk

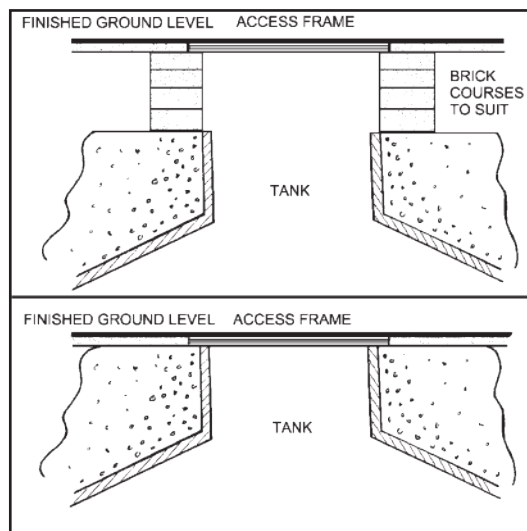
PUMPMATIC 125 Packaged Sewage Pumping System

PUMP SELECTED
TO MEET
CUSTOMER
REQUIREMENTS

SECTION A-A



SECTIONAL PLAN OF GRP TANK



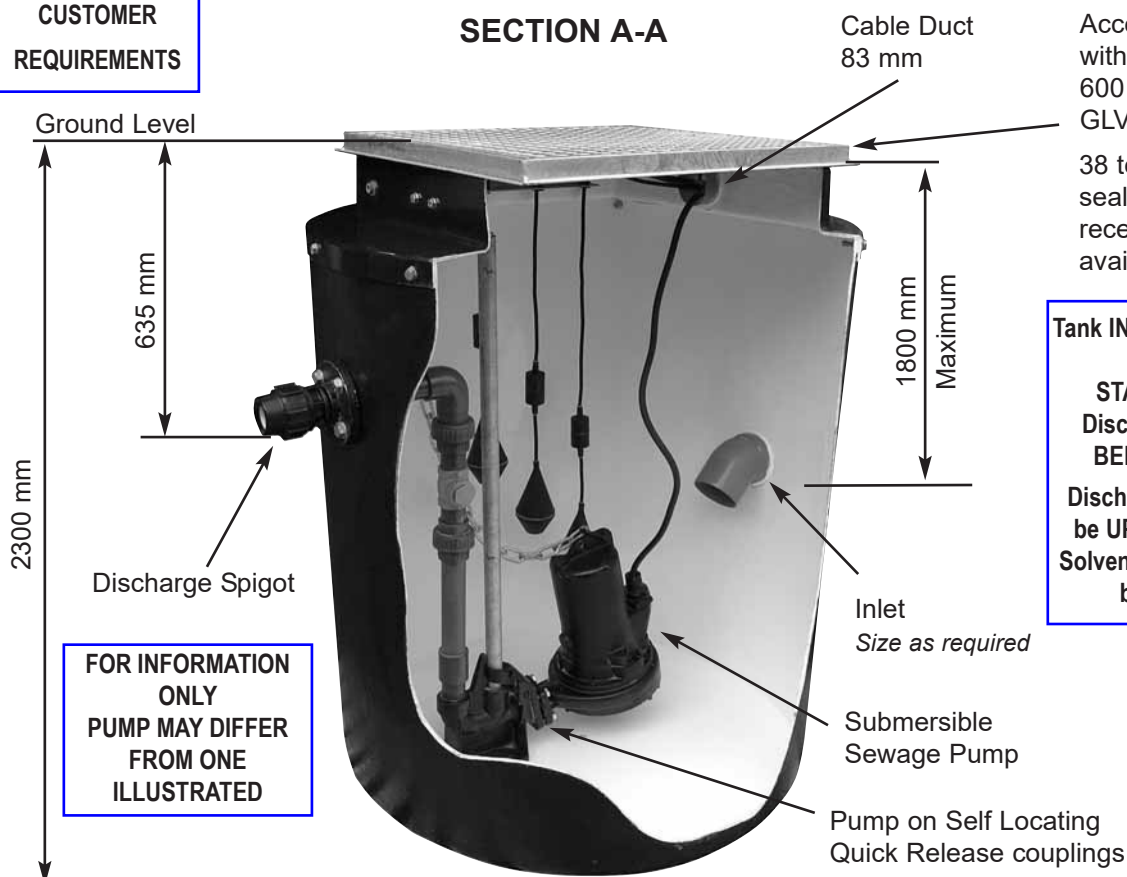
Due to a policy of continuous product improvement we reserve the right to alter specifications without notice.

56 Youngs Industrial Estate, Aldermaston, Berks. RG7 4PW
Tel: 0118 9821555 Fax: 0118 9821666
E-mail: support@pumptechnology.co.uk
Web Site: www.pumptechnology.co.uk

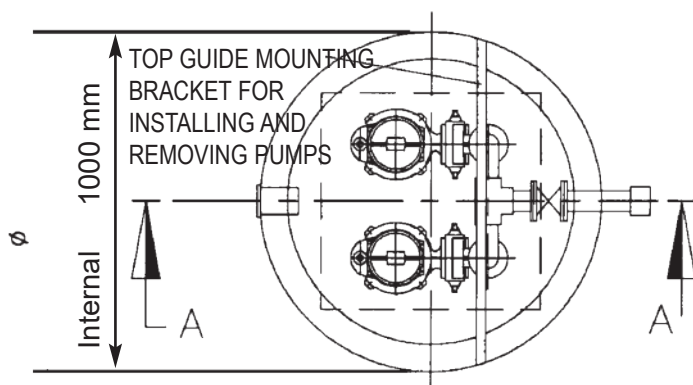
PUMPMATIC 200 Packaged Sewage Pumping System

PUMP SELECTED
TO MEET
CUSTOMER
REQUIREMENTS

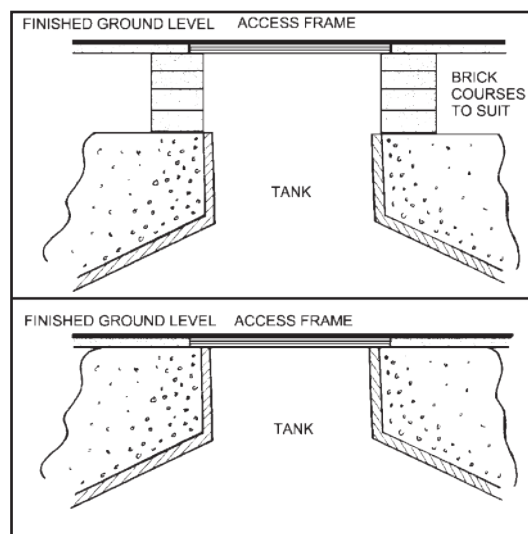
SECTION A-A



FOR INFORMATION
ONLY
PUMP MAY DIFFER
FROM ONE
ILLUSTRATED



SECTIONAL PLAN OF GRP TANK



Due to a policy of continuous product improvement we reserve the right to alter specifications without notice.

56 Youngs Industrial Estate, Aldermaston, Berks. RG7 4PW

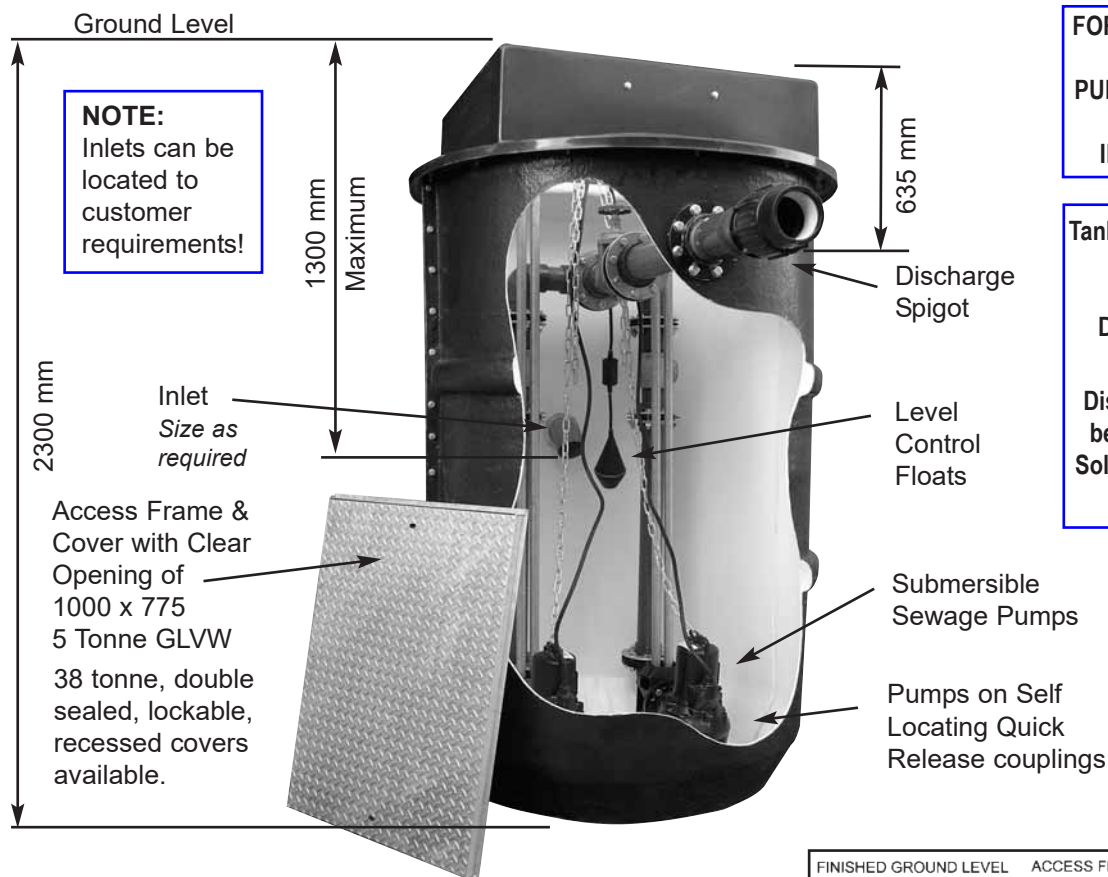
Tel: 0118 9821555 Fax: 0118 9821666

E-mail: support@pumptechnology.co.uk

Web Site: www.pumptechnology.co.uk

PUMPMATIC 300 Packaged Sewage Pumping System

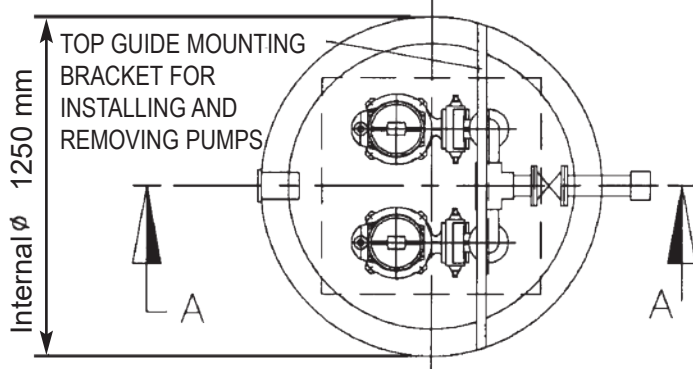
SECTION A-A



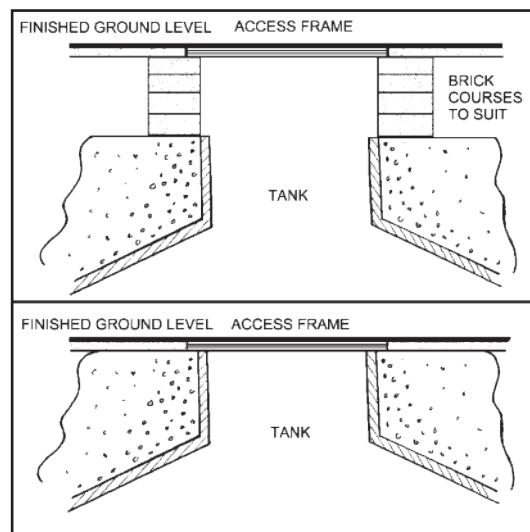
FOR INFORMATION ONLY
PUMP MAY DIFFER FROM ONE ILLUSTRATED

Tank INVERT & DISCHARGE are set at a STANDARD HEIGHT
Discuss any variations BEFORE ORDERING
Discharge pipework must be UPVC Class 'C' or 'D'
Solvent weld or MDPE pipe black as shown

PUMP SELECTED TO MEET CUSTOMER REQUIREMENTS



SECTIONAL PLAN OF GRP TANK



Due to a policy of continuous product improvement we reserve the right to alter specifications without notice.

56 Youngs Industrial Estate, Aldermaston, Berks. RG7 4PW
Tel: 0118 9821555 Fax: 0118 9821666
E-mail: support@pumptechnology.co.uk
Web Site: www.pumptechnology.co.uk

CONTROL PANELS

Pump Technology Ltd can supply any control panel to meet the customers specification.

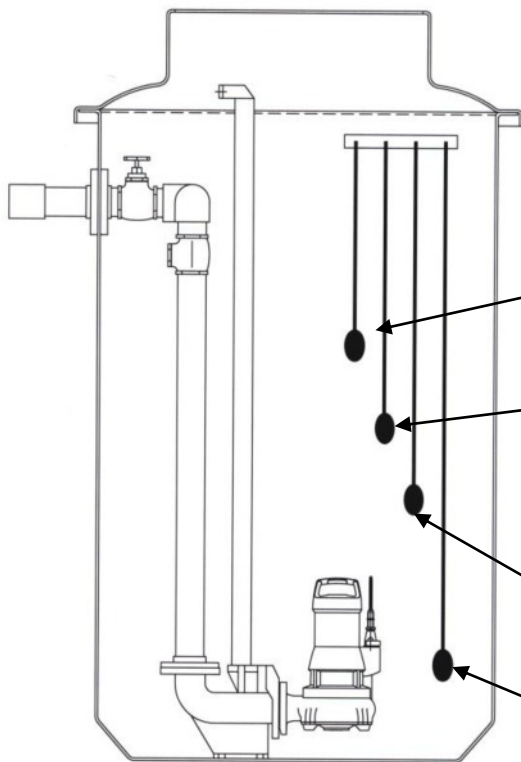
We can offer single to multiple pump controls, GSM or landline telemetry, ATEX rated, battery backup and hour run meters.

Reliable and cost-effective control system for the arduous and turbulent conditions encountered in COMMERCIAL APPLICATIONS.

- Simple installation from outside of sump
- Easy visibility of start and stop points
- Unaffected by fat, grease, debris and foam
- Excellent in turbulent sumps
- Safe, low sensing voltage



EXAMPLE OF A DUAL PUMP CONTROL PANEL OPERATION



SYSTEM OPERATION

The system controls the level into the storage tank automatically via the non-mercury operated float switches.

Assist Start Float is set to the level at which the second pump is required to start.

High Level Float is set to the level at which the alarm is required to give warnings of potential flood conditions. This should be set at the level of the **INLET** to maximise the tank capacity.

Duty Start Float is set to the level at which the first pump is required to start.

Stop Float is set to the level at which the pumps are required to stop. This **must** be set above the volute of the pump.

56 Youngs Industrial Estate, Aldermaston, Berks. RG7 4PW

Tel: 0118 9821555 Fax: 0118 9821666

E-mail: support@pumptechnology.co.uk

Web Site: www.pumptechnology.co.uk

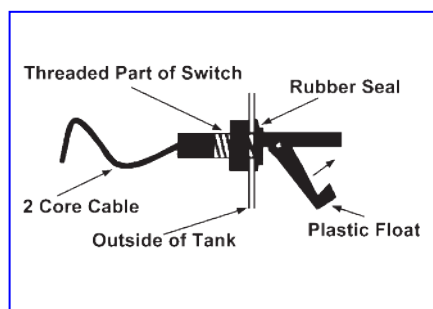
NOTE: These High Level Alarms require their own **DEDICATED** power supply and **MUST NOT** be powered from the same source as the pump/s.

HIGH LEVEL ALARMS for SEWAGE & WASTE WATER PUMPING SYSTEMS

These units are designed for connection to a 240V supply circuit
The alarm buzzer has a minimum volume of 80 dBA (at 1m distance).
A rechargeable battery is fitted in case of mains electricity supply failure.

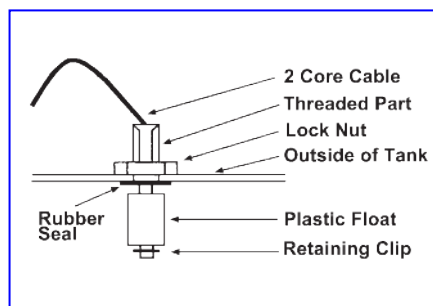
PTL1A (SIDE MOUNTED FLOAT) USED WITH A FLOOR MOUNTED WASTE WATER SYSTEM e.g. DRAINMINOR DRAINMAJOR

The float mechanism provided must be attached through the side of the GRP tank and positioned in an area away from the inverts from sinks, dishwashers, glasswashers etc. to prevent ingress of water inadvertently actuating the horizontal float switch mechanism.



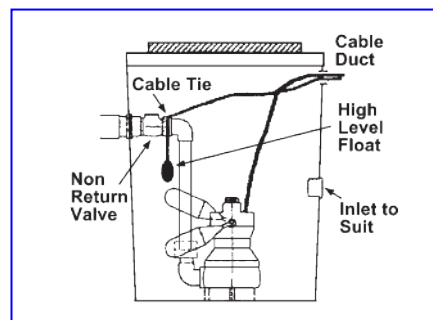
PTL1B (TOP MOUNTED FLOAT) USED WITH A FLOOR MOUNTED WASTE WATER SYSTEM e.g. DRAINMASTER.

The float mechanism provided must be attached through the indent point situated under the end cover on the top of the tank.



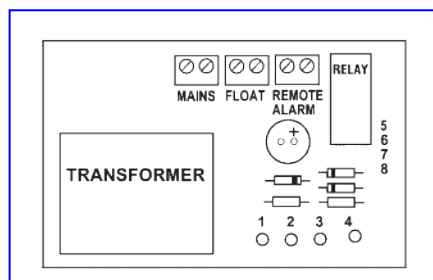
PTL1C (NON MERCURY SWITCH FLOAT) USED WITH BELOW GROUND SEWAGE OR WASTE WATER PUMPING SYSTEM e.g. PUMPMATIC.

A float and weight is provided to activate the High Level Alarm.
We recommend that the float is securely attached to the discharge pipework at a higher level than the activation level of the automatic float switch of the pump.



PTL1D (REMOTE ALARM) USED WITH FLOOR MOUNTED SEWAGE SYSTEMS e.g. EFFLU MAXI, EFFLU MIDI

These systems have volt free contacts on both the single and dual pump versions. They are designed to be wired into the main Control Panel of Pump Technology Floor Mounted Waste Water and Sewage Pumping Systems.



56 Youngs Industrial Estate, Aldermaston, Berks. RG7 4PW

Tel: 0118 9821555 Fax: 0118 9821666

E-mail: support@pumptechnology.co.uk

Web Site: www.pumptechnology.co.uk

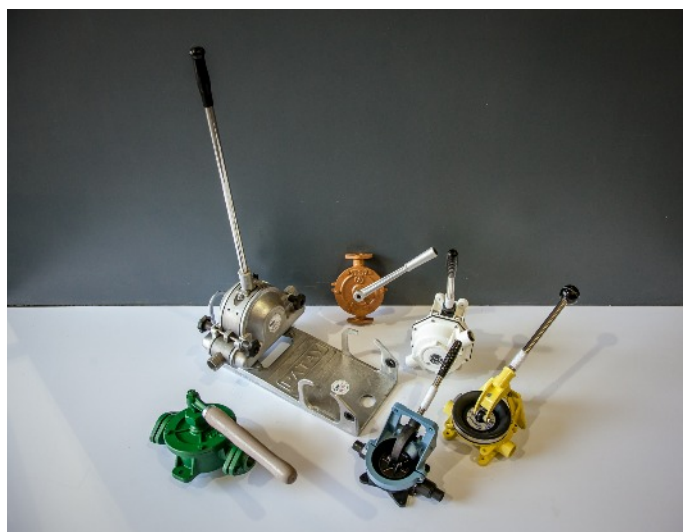
HAND PUMPS

Our Hand Pump selection is for both water and diesel, and a range of 12v and 24v low voltage submersible pumps / inline Pumps.

We're also specialists in pressure testing hand pumps (25100 Bar).

Hand Pump: Manual

- Rotary – Semi Rotary – Diaphragm
- Water
- Salt Water
- Barrel / Drum
- Diesel
- Chemicals
- Pressure Testing
- Site Pumps
- Low Voltage Transfer Pumps (12v +240)
- Water
- Diesel (NOT Petrol)



IN-LINE STRAINERS

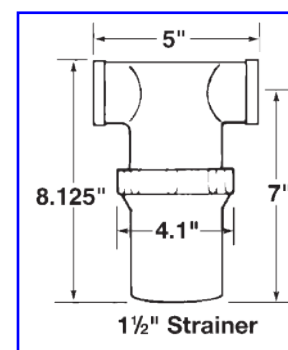
Suitable for DRAINMASTER, DRAINMAJOR and DRAINING Waste Water Pumping Systems with Cleaners' Sinks and Hairdressers Hand basins.

(Not suitable for Kitchen Sinks with grease)

SPECIFICATIONS

Strainers have 1½" BSP female threaded connections to which are fitted plastic to male iron adaptors for solvent weld 1½" plastic waste pipe.

Filter screens are 20 mesh stainless steel which are easily removable for cleaning.



INSTALLATION

Install the line strainer on the inlet side of the pump. The arrow moulded in the strainer cap indicates flow of liquid.

CHARCOVENT & MICROVENT

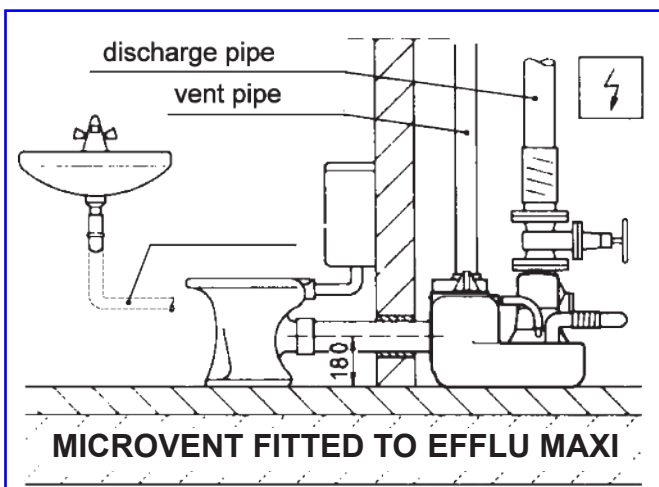
The SOLUTION when it is not possible to "Vent to Air"

Carbon/Charcoal Filter-Breather Systems for venting Pump Technology Ltd. Waste Water and Sewage Pumping Systems where a vent to atmosphere is not possible (all pumping systems require a vent).

Both **CHARCOVENT** and **MICROVENT** contain an Activated Carbon Filter with highly absorptive powers ideal for removing unpleasant odours and gaseous contaminants from an air stream and also allow two way air passage to enable the pump unit to breathe.

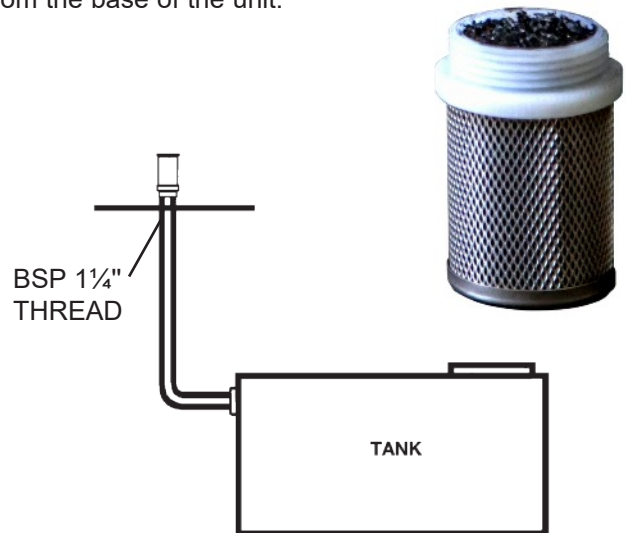
NOTE:

CHARCOVENT and **MICROVENT** should be fitted at the same height or higher than the highest point of the discharge pipework. Where possible vent unit into Ceiling Void, or similar.



The **CHARCOVENT** should be fitted to tank using 1¼" pipework and a tank connector positioned through the side of the tank **NOT THE LID** -as high as possible from the base of the unit.

CHARCOVENT
For Waste Water
Pumping Systems
WITHOUT VERY
HOT WATER



MICROVENT
For Waste Water
(VERY HOT) and
Sewage Pumping
Systems

MICROVENT should be used with:

- Waste Water Pumping Systems where waste water is **EXTREMELY HOT** i.e Commercial Dishwashers, Glasswashers etc. (connect to minimum 2" pipework)
- With Floor Mounted Sewage Pumping Systems e.g. **EFFLU MIDI**, **EFFLU MACRO** & **EFFLU MAXI** (connect to minimum 3" pipework)

DOUBLE LIFT PIPE RUN CAN EASILY BE HANDLED

DOUBLE LIFT PIPE RUN CAN EASILY BE HANDLED

Pipe Requirements:

Pipe requirement- DN32, dia 28 ID or
DN40, dia 36 ID

Reliable:

An open vortex pump impeller with large clearances between pump opening and tank floor make the

FlushMaster more tolerant of user abuse

Built-in Alarm:

An integral, acoustic alarm and volt free connections for coupling to a remote alarm or Building Management Services

Simple Un-clogging:

Un-clog the open Vortex impeller without removing the cover. Simply push a screwdriver down onto the head of the motor / pump shaft, reverse the impeller and the clogged item will probably drop free.

Easy Component replacement:

All parts can be simply removed and replaced without removing the tank from the toilet

Multiple Connections:

Each pump is supplied with a full set of installation connections for direct mounting behind the toilet or mounting behind a partition wall

Dimensions mm

46147-01

56 Youngs Industrial Estate, Aldermaston, Berks. RG7 4PW

Tel: 0118 9821555 Fax: 0118 9821666

E-mail: support@pumptechnology.co.uk

Web Site: www.pumptechnology.co.uk

-

Multiple Uses:

Suitable for connection to a single toilet, bidet, washbasin or shower (Not a bath or washing machine)

**Pump Technology Ltd
products are available from
stock & your local merchant.**

DOUBLE LIFT PIPE RUN CAN EASILY BE HANDLED

Dimensions mm

Technical drawing of the DN32 (Ø40) model of the 46147-01 device. The drawing includes three views: a front view, a side view, and a top view. The front view shows a width of 455 mm and a height of 400 mm. The side view shows a depth of 180 mm and a mounting flange diameter of Ø110 mm. The top view shows a width of 455 mm and a depth of 535 mm. The drawing also indicates connection ports for DN25 (Ø32) and DN32 (Ø40) and a mounting hole diameter of Ø50 mm.

An open vortex pump impeller with large clearances between pump opening and tank floor make the

FlushMaster more tolerant of user abuse

An integral, acoustic alarm and volt free connections for coupling to a remote alarm or Building Management Services

Un-clog the open Vortex impeller without removing the cover. Simply push a screwdriver down onto the head of the motor / pump shaft, reverse the impeller and the clogged item will probably drop free.

All parts can be simply removed and replaced without removing the tank from the toilet

Each pump is supplied with a full set of installation connections for direct mounting behind the toilet or mounting behind a partition wall

Tel: 0118 9821555 Fax: 0118 9821666

E-mail: support@pumptechnology.co.uk

Web Site: www.pumptechology.co.uk

BOOSTER PUMPS

Pump Technology can provide pumpsets for a range of services from the **SMALL DOMESTIC PROPERTY** up to the **LARGEST COMMERCIAL APPLICATIONS**



BOOSTER PUMPS



CONSTANT PRESSURE BOOSTER SETS

These units are particularly suitable for:

DOMESTIC, SMALL CIVIL INDUSTRIAL installation and IRRIGATION.

They are noteworthy for their absolute reliability, easy functioning and minimal maintenance.

CONSTRUCTION CHARACTERISTICS

- Multistage centrifugal electric pumps on a vertical axis
- Galvanised steel plate complete with 4 anti-vibration rubber feet
- Suction and delivery manifold in stainless steel AISI 304
- Ball valves on suction and delivery pipe union of each pump
- Check valves on the suction side of each pump
- AISI 304 stainless steel manifold caps
- Radial pressure gauge with shut-off valve
- Inverter Control unit on the delivery of each pump
- Protection Box

NO VOICEMAIL

Talk Directly to our Technical Experts!

56 Youngs Industrial Estate, Aldermaston, Berks. RG7 4PW

Tel: 0118 9821555 Fax: 0118 9821666

E-mail: support@pumptechnology.co.uk

Web Site: www.pumptechnology.co.uk

Whale® SHOWER DRAIN PUMPS



WET-ROOM PUMPED SHOWER DRAINAGE SOLUTIONS

for minimal access wet-room applications

In many contemporary shower and wet-rooms a gravity drain is not a feasible. In a loft conversion, where room height is constrained, or in a basement waste water outlet is higher than the shower gully, an alternative system is required.

The Whale Shower Drain systems provide the solution.

This electrically powered pump system is quiet and compact.
It can be concealed in a stud wall

Features and Benefits

- The pump gully requires a minimal installation depth of only 35mm
- Quiet operation when running
- Filter free waste system - minimal cleaning required
- Valves integral to the pump prevents odours escaping from the drainage system
- The flow rate of the Shower Drain system automatically adjusts to changes in shower flow rates

Installations

- Ideal for wet-room applications
- Maximizes vertical space - ideal for loft conversions or other areas or restricted headroom
- Capable of pumping up to the ground floor waste outlet - ideal for basement shower installations
- May be used with conventional shower trays and tiled or vinyl floored wet-rooms
- Compact transformer, control unit and pump - easy to conceal

INSTANT MATCH BLUETOOTH KIT

The easy drainage solution for wet rooms in difficult locations



To minimise gully suction noise the Whale Instant Match pump with Bluetooth Wireless Technology uses a digital signal sent from the Mira Advance Flex Extra shower to automatically adjust the pump speed in relation to the flow rate of the shower.

No setup necessary gives plug and play operation.

- No physical link required between Instant Match and Mira Advance Flex Extra Wireless
- Wireless control
- Shower automatically turns off in the event of power failure to the pump
- Quiet gully
- Simple pairing of pump with shower

56 Youngs Industrial Estate, Aldermaston, Berks. RG7 4PW

Tel: 0118 9821555 Fax: 0118 9821666

E-mail: support@pumptechnology.co.uk

Web Site: www.pumptechnology.co.uk

GREASE MANAGEMENT

DRAIN DOSING



DrainDoser

The DrainDoser provides a reliable drain dosing solution for smaller catering establishments

- Easy wall mounting
- Simple to maintain
- Battery operated

The DrainDoser is best used in CONJUNCTION with a Grease Separator which acts as a point of treatment.

Our automatic dosing pump is the essential partner for your grease trap. It allows you to continuously and evenly dispense our biological dosing fluid (sold separately) into your trap over a 24/7 period meaning that your trap is always performing at its best!

CALL US ON 0118 9821555 for assistance with all of your GREASE MANAGEMENT PROBLEMS

Systems available for:

- **RESTAURANTS**
- **HOTELS**
- **AIRPORTS**
- **OFFICE BLOCKS**
- **STADIUMS**
- **COLLEGES**
- **HOSPITALS**
- **& MANY MORE**

CAN BE USED IN CONJUNCTION WITH ANY OF OUR FLOOR MOUNTED PUMP UNITS - SEE PAGES 3 - 12



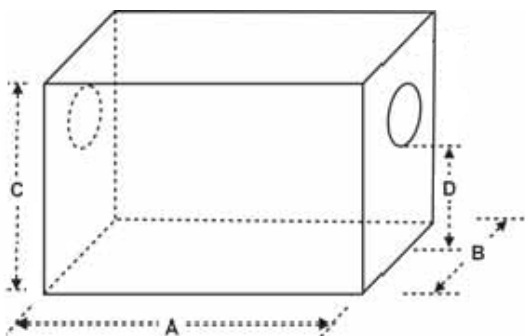
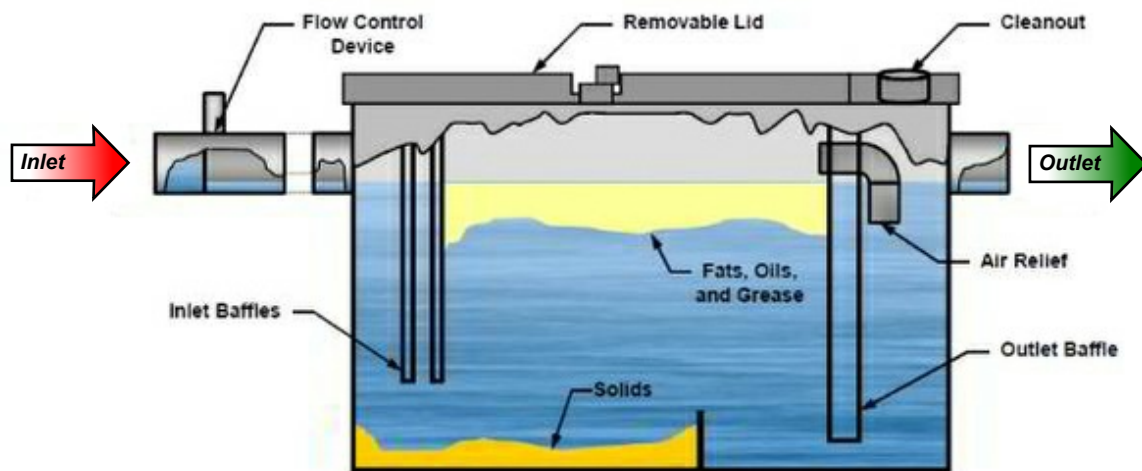
GREASE MANAGEMENT

PTL GT GREASE SEPARATORS



FEATURES

- Stainless steel epoxy coated grease traps
- Constructed using top grade 304 stainless steel
- Can be used both internally and externally
- Above ground and below ground



	Inlet/Outlet ø	A	B	C	D	Application
PTL4KG	50mm	418	263	250	190	1 - 2 Sinks
PTL7KG	50mm	460	338	310	205	2 - 3 Sinks
PTL14KG	50mm	570	400	350	262	3 + Sinks

56 Youngs Industrial Estate, Aldermaston, Berks. RG7 4PW
 Tel: 0118 9821555 Fax: 0118 9821666
 E-mail: support@pumptechnology.co.uk
 Web Site: www.pumptechnology.co.uk

Cinderella®

INCINERATION TOILETS

When nature calls, it's good to know that civilisation is near. Cinderella's incineration toilets are world-class.

They do not require water. They are odourless and environmentally friendly. No handling of waste, only an insignificant quantity of ash remains.

TYPICAL USES:-

- Remote Facilities
- Beach Chalets
- Garden Buildings
- Shepherds Huts
- Eco Buildings
- High Cranes
- Construction Sites
- Glamping
- Yurts



PUMP TECHNOLOGY GROUP COMPANIES



Service for all pump systems



Bespoke Tank manufacturing



Marine pump out & toilet systems



NOTES

Terms & Conditions



1. DEFINITIONS

- (a) The term 'Company' shall mean Pump Technology Limited and its trading divisions.
- (b) The term 'Customer' shall mean any person, firm or company who purchases goods or services from the company.

2. CONDITIONS

These conditions apply to and are deemed to be incorporated in all orders, contracts, quotations and tenders for the supply and sale of goods or services by the Company.

These conditions supersede any terms and conditions contained in any Customer's order unless otherwise agreed in writing by the company.

3. QUOTATIONS

Quotations are made upon the basis of materials and labour prevailing at the date thereof and are open for acceptance for a period of thirty days from the date of quotation.

Should a quotation not be accepted within thirty days the quotation may be subject to alteration to take account of increases in costs. In addition the quotation may be withdrawn at any time prior to acceptance in writing. Stenographical errors or clerical errors, if any, are subject to subsequent correction.

4. PUBLISHED PRICES

Orders placed will be charged at prices current at the time of delivery.

5. VALUE ADDED TAX

All prices quoted are exclusive of Value Added Tax.

6. ACCOUNTS

Credit accounts can only be opened at the Company's discretion and subject to satisfactory references being given otherwise remittances must be sent with orders. Where a credit account has been opened goods shall be paid for 30 days from invoice date. The Company reserves the right to set a maximum amount of credit allowable upon each account and to withdraw credit facilities without explanation. In the event of non payment in accordance with the credit terms the whole of the price for all goods sold by the Company to the Customer whether under this or any other contract, shall immediately become due and payable and the Company reserves the right at its option to cancel or postpone the further performance of its obligations whether under this or any other contract without prejudice to any other right or remedy available to the Customer.

As signatories to the Better Payment Practice Code we reserve the right to charge the Customer Statutory interest in accordance with 'The Late Payment of Commercial Debts (Interest) Act 1998', normally 8% above the Reference Rate (Bank of England Base Rate), until payment is made in full. See www.payontime.co.uk

7. DESCRIPTION AND QUALITY

Illustrations, descriptions, weights and technical data in any of the Company's catalogues, price lists and statements (written or oral) made by any representative of the Company are provided to give customers an approximate picture and description only and do not form the basis of any contractual liability. No warranty or condition that the article shall accord with such illustration, description or statement is to be implied and any warranty or condition capable of or arising is hereby excluded. Designs of goods are subject to alteration without notice. All quotations given and sales made are upon the condition that although goods supplied are of sound commercial quality, the Company can accept no liability as to their suitability for any purpose other than that specified in writing by the Customer at or prior to the time of sale.

8. GUARANTEE

If during the period of twelve calendar months from the date of supply by the Company of any products shall be proved by the customer to the satisfaction of the Company to be defective by reason of faulty design, or defective materials of manufacture, and the

9. TEST AND INSPECTION

Special tests or tests in the presence of the Customer or his representative will be charged to the Customer unless otherwise agreed in writing. In the event of delay on the Customer's part or his representative's part in attending such tests, after 7 days notice of the place and time of such tests, the tests will proceed in the Customer's absence and shall be deemed to have been carried out in the Customer's presence.

10. PASSING OF PROPERTY AND RISK

- (a) The risk in the goods shall pass to the Customer on delivery.
- (b) Title to the goods shall remain vested in the Company after delivery until payment of all sums (whether arising out of this or any other contract) has been made in full to the Company.
- (c) As long as title in the goods remains vested in the Company and the goods are in possession or under the control of the Customer, the following provisions will apply:
- i) The Customer may (unless otherwise notified in writing by the Company) use, sell or otherwise deal with the goods in the ordinary course of business.
- ii) The Customer shall separately store and keep clearly identified the goods from other goods.
- iii) The Company may at any time on giving prior notice enter the premises of the Customer for the purpose of inspecting and identifying the goods and the Customer irrevocably authorises the Company to enter upon its premises for that purpose.
- iv) The Company may at any time revoke the Customer's powers in i) above by notice to the Customer if the Customer is in default for longer than 7 days in the payment of any sum whatsoever due to the Company under this or any other contract or if the Company has bonafide doubts as to the solvency of the Customer.
- v) The Customer's powers in i) above shall automatically cease if a receiver is appointed over any assets of the undertaking of the Customer or a winding up order is made against the Customer or the Customer goes into voluntary liquidation (otherwise than for the purpose of reconstruction or amalgamation) or calls a meeting of, or makes any arrangement or composition with creditors or commits any act of bankruptcy.
- vi) Upon determination of the Customer's powers in i) above the Customer shall place the goods at the disposal of the Company who shall be entitled to enter upon any premises of the Customer for the purpose of removing such goods from the premises (including severance from realty where necessary).
- vii) If goods are returned or repossessed in accordance with foregoing provisions the Company shall repay to the Customer any sums received from the Customer in part payment of the price of the goods up to a maximum amount equal to the current market value of the goods based on their condition at the time of return or repossession and after deducting all costs and expenses of the Company in having the goods returned or repossessed and subject also to any right of set off the Company may have in respect of other sums owing by the Customer to the Company.

11. DELIVERY

Dates quoted for delivery are approximate only and in this respect time shall not be of the essence of the contract. It shall suffice for the Company to deliver within a reasonable time of the date of delivery quoted, regard being had to all the surrounding circumstances. Where the Company offers delivery to a site nominated by the Customer, then its obligation shall be to deliver as near to the site as a safe hard road permits. The Customer shall provide free of charge any labour or machinery required for the purpose of unloading, loading or stacking. In the event of any goods or any packing or container being delivered and deposited, whether on the public highway or elsewhere the Customer shall be responsible for all steps which need to be taken for the protection of persons or property in relation to such goods, packing or container and shall indemnify the Company in respect of all or any

PUMP[®]

TECHNOLOGY LTD



PUMP TECHNOLOGY IS SPECIAL!

- **Super FAST Response Times:**
*BASIC installations can usually be quoted and Specified in 30 Minutes.
More complex Installations still
Only take 4 to 5 hours.*
- **Remember - the more information**
*(details, dimensions, schematics etc.)
that we have, the faster and
more accurate our quotation.*
- **For difficult installations, a**
*Pump Technology Ltd. Engineer
can make a site visit to advise you.*
- **Our extensive range and massive**
*stocks enable your project to be
completed "ON TIME" and "ON BUDGET".*

***Our Service is WELL BEYOND that
offered by most other suppliers.***

Pick up the phone and give us a try!

Tel: 0118 9821 555 - Fax: 0118 9821 666

PUMP[®]

TECHNOLOGY LTD

Unit 56 Youngs Industrial Estate,
Aldermaston, Berks RG7 4PW
E: support@pumptechnology.co.uk
W: www.pumptechnology.co.uk

