

DRAINING 30 TWIN (240V) (Duty/Standby Wastewater Pumping System with Control Panel)



DrainKing 30 Twin (240V) Part No. 170/NS
(Duty/Standby Wastewater Pumping System with
Control Panel)

General Description:

DrainKing 30 Twin (240V) features a heavy-duty tank and submersible pump for automatically pumping wastewater from commercial kitchens, multiple sinks, dishwashers etc.

The DrainKing Twin provides users with the additional security of duty / standby operation. If one pump should become blocked or fail, the wastewater would rise within the common tank, and activate the high-level alarm. The control panel would start the other pump as the standby pump.

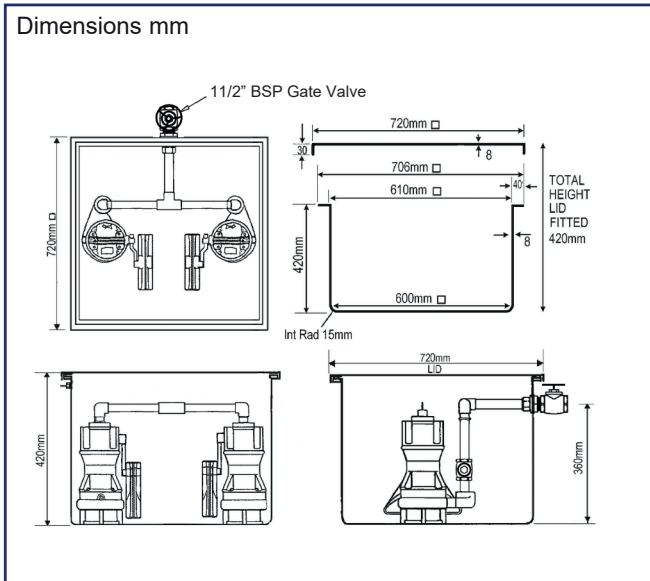


Control Panel:

The DrainKing Twin is supplied with a pump station control panel and a single high-level finger float. The duty pump is automatically alternated after every pump operation. If the high-level alarm is activated the standby pump would become operational. The panel features door isolation switch, pump 1 or 2 operational/tripped lights, alarm buzzer (minimum volume of 80 Dba at 1m distance) alarm on/off switch, 3 off volt free ports for BMS connection.

A rechargeable battery is fitted in case of mains electricity supply failure.

DRAINING 30 TWIN (240V) (Duty/Standby Wastewater Pumping System with Control Panel)



Tank:

Manufactured from GRP and fully rigged with internal pipe work, gate valve and non-return valves.

Tank Volume: 151.2 litres

Total Approximate Usable Volume - 100.8 litres

Tank Inlets:

To suit site layout, all inverts should be brought into the side of the tank by drilling a hole and using an appropriate tank connector. Minimum invert height 110 mm.

Tank Outlet:

Fitted 1 1/2" BSP male thread discharge outlet (Gate Valve supplied female thread)

Tank Venting:

To suit site layout, a vent should be taken from the side of the tank by drilling a hole and using an appropriate tank connector. Vent pipe should be 1 1/4" min. to air or via a Pump Technology MicroVent.

**DRAINING 30 TWIN (240V)
(Duty/Standby Wastewater Pumping
System with Control Panel)**

Pump:

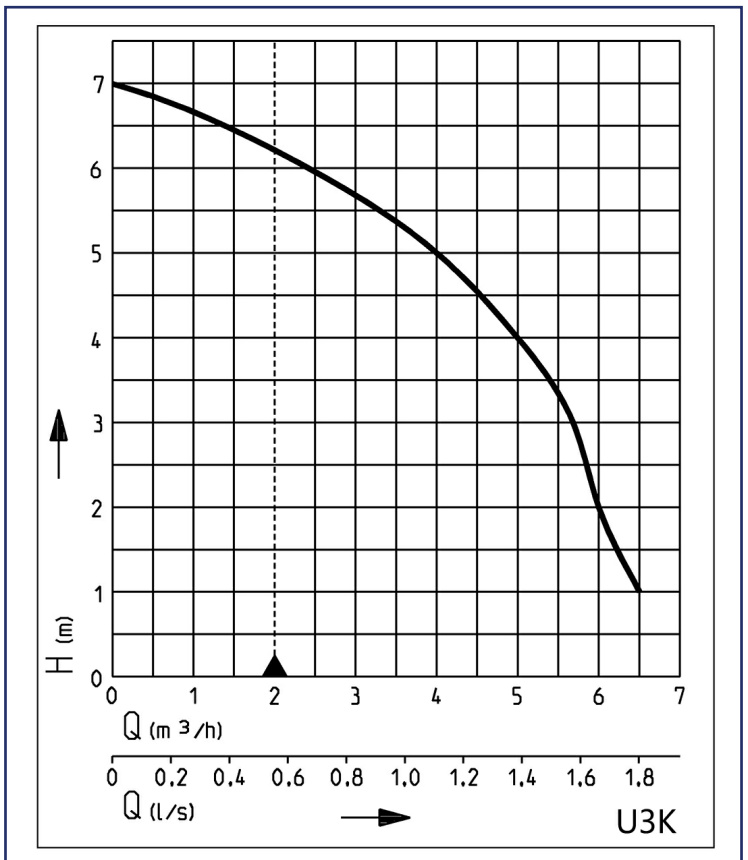
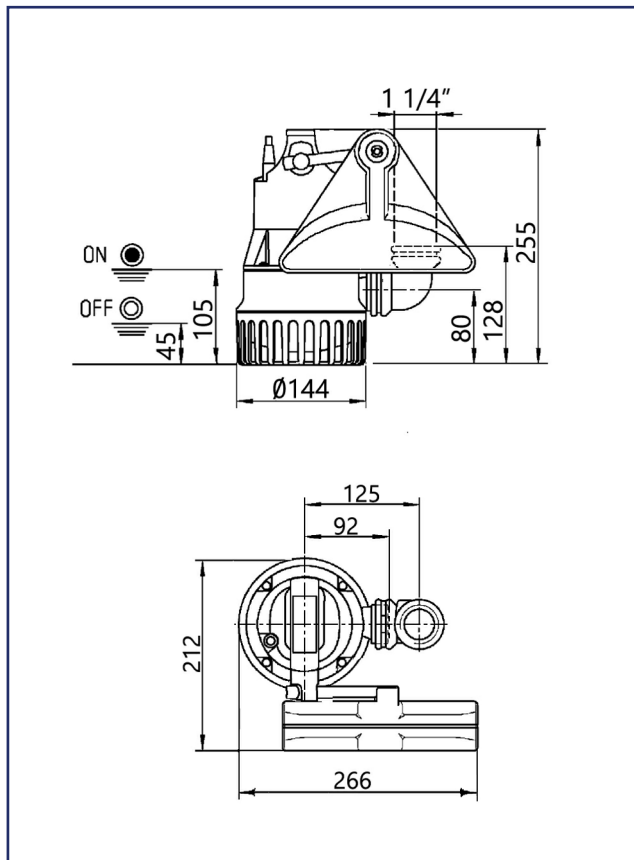
- Cooling jacket for motor housing
- Flushing device activatable and deactivatable
- Variable discharge branch with closable ventilation
- Run dry protection
- EIP Technology
- Moisture sealed cable inlet
- Fluid temperature 35 °C, temporarily 60 °C (10 min.)



Description:

The heavy duty centrifugal submersible drainage pump U3 KS is suitable for dealing with wastewater and capable of handling soft solids up to 10mm in particle size.

Dimensions/switching points U3 (mm)



DRAINING 30 TWIN (240V) (Duty/Standby Wastewater Pumping System with Control Panel)

Scope of Supply

Pump ready for connection acc. to EN 12050 with 90°, 1¼" female connection elbow, 4m cable and automatic level float switch.

Mechanical Data

| | | | |
|---------------------|---------------------------------|--------------------|----------------------|
| Pump | Vertical single stage | Run dry protection | Yes |
| Free Passage | 10 mm | Shaft | Stainless Steel |
| Bearing | Ball bearing, grease-lubricated | Impeller | Vortex impeller, GFK |
| Seal on motor side | Rotary shaft seal | Motor housing | Stainless Steel |
| Oil chamber | Yes | Pump housing | GRP |
| Seal on medium side | 2-fold rotary shaft seal | Submersible | Yes |
| | | Pressure outlet | 1¼" |

Electrical Data

| | | | |
|-------------------|-------------|--------------------|------------|
| Voltage | 1/N/PE-230V | Insulation class | F |
| Motor rating P1 | 0.32kW | Winding thermostat | Yes |
| Motor rating P2 | 0.2kW | Motor protection | Integrated |
| Current | 1.4A | Plug | Safety |
| Type of enclosure | IP 68 | | |

U3

| Type | Code No. | Power line | Wires | Weight |
|------------------------------------|----------------|------------|-------|--------|
| With built-in level control | | | | |
| U3 KS, 4m cable | JP50000 | 4m H07RN-F | 3G1,0 | 5.5kg |

Notes:

- This unit is for wastewater only
- Ensure the location of the DrainKing enables the lid to be easily removed for regular inspection and maintenance
- If the discharge pipework connection to a soil stack, manhole etc. is below the discharge outlet of the tank, an anti-syphon unit must be fitted at the highest point of the discharge pipework
- Warranty: The DrainKing 30 Twin (240V) comes complete with a one year warranty.

Pump Technology Ltd. - 0118 9821 555 - www.pumptechnology.co.uk

Official Distributor and Stockist Authorised by Jung Pumpen GmbH



4 of 4

Pump Technology Ltd. reserves the right to change the specification without prior notice.